

Guided Pathways Developments at Gavilan September 2017

- I. During 2015-16 two exploratory pathways retreats were held with representatives of campus programs and grants teams to develop “crosswalks” of student success efforts with the goal of increasing collaboration and integration. A joint division meeting in spring 2016 focused on faculty discussion of pathways principles.
- II. The Guided Pathways FIG (Focused Inquiry Group) formed under the Learning Council in Dec. 2016. Regular attenders from all areas of the college have been participating in bimonthly meetings to learn about best practices and share current efforts. In addition, brown bag forums were held during college hour and attended by students, faculty, classified staff, administrators, and board members.
- III. Career Ladders Project began working with Gavilan in spring 2017, facilitating open forums and a summer workshop on Aug. 17-18, focusing on cross-area planning, data analysis, career and major exploration, metamajors, and program paths, with a special emphasis on STEM and Child Development and Educational Studies.
- IV. Shared governance: in spring 2017 representatives of the Pathways FIG met with campus governing groups, including the Academic Senate, ASGC, Classified Council, Student Services, and the President’s Council.
- V. **Chancellor’s Office and State Funding**
\$150 million in state funding has been allocated for guided pathways efforts, which will be locally-directed by each college. The grant funding process begins in fall 2017 with campuses assessing current efforts aligned with pathways principles and funding proposals due in February 2018.
- VI. **Pathways Task Force Proposal**
The members of the Pathways FIG urge the Academic Senate to form a task group to guide this initiative at Gavilan. As each college determines how to structure its guided pathways, faculty should lead this effort, with participation from all areas of the campus, and the Academic Senate is our vehicle for doing so. State money will be allocated for this initiative, and faculty should help determine priorities related to that spending.

Recognizing the critical role of faculty in this work, the State Academic Senate has encouraged local campuses to be involved in pathways decision-making. See Resolution 9.12 F15 *Support Local Development of Curricular Pathways* and Resolution 9.03 F16 *Investigate Effective Practices for Pathways Programs*.

Possible next steps for a Senate pathways task force could include:

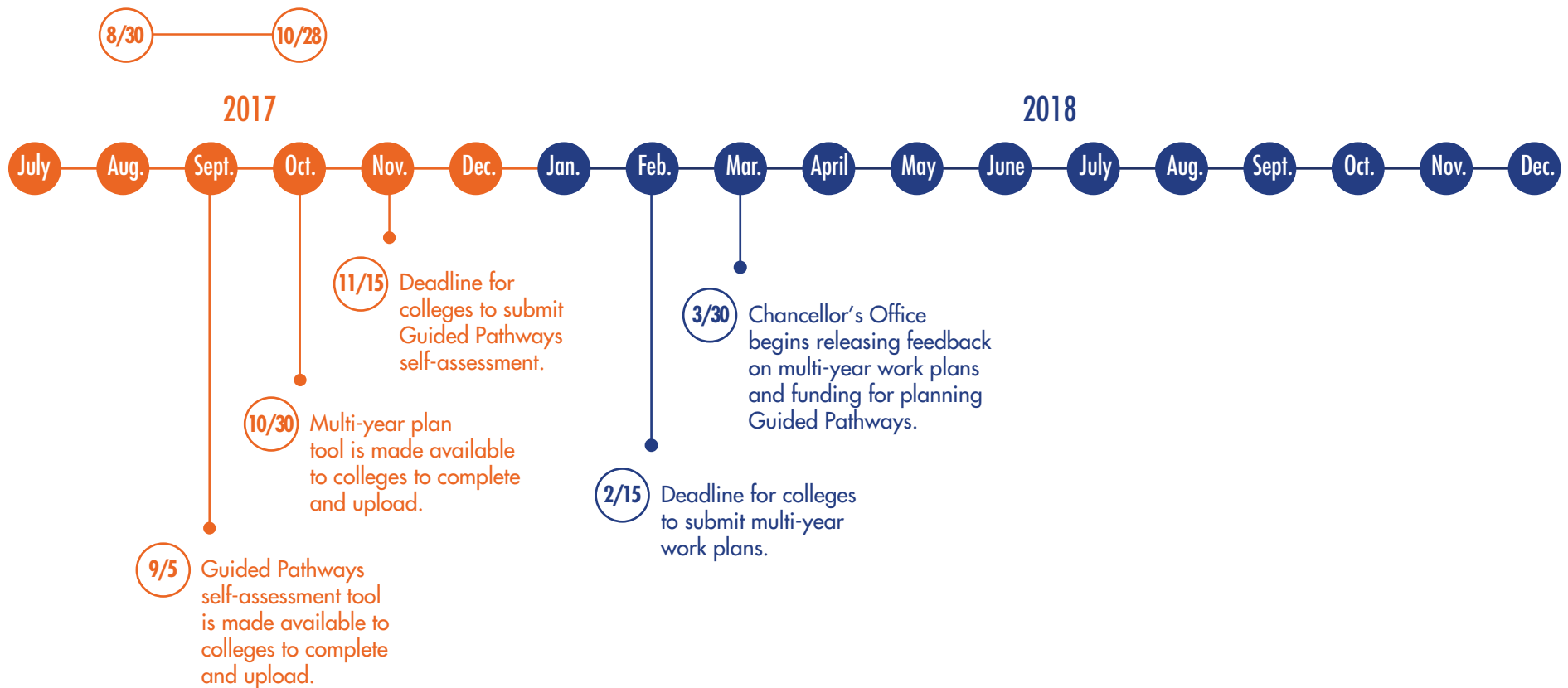
1. Prepare to apply for state funding
2. Develop a timeline and action plan
3. Guide campus outreach, engagement, and discussion
4. Identify needed resources

Gavilan Guided Pathways resources, state grant information, and updates about the FIG can be found here: http://www.gavilan.edu/academic/guided_pathways/index.php

CALIFORNIA COMMUNITY COLLEGES GUIDED PATHWAYS

Timeline for Awards

Register for and attend a required Institutional Effectiveness Partnership Initiative (IEPI) workshop in your region.



09.05.17

Guided Pathways

at California Community Colleges

Principles of Guided Pathways

The Guided Pathways Model creates a highly structured approach to student success that:



Provides all students with a set of clear course-taking patterns that promotes better enrollment decisions and prepares students for future success.



Integrates support services in ways that make it easier for students to get the help they need during every step of their community college experience.



Four Pillars of Guided Pathways



Create clear curricular pathways to employment and further education.



Help students choose and enter their pathway.



Help students stay on their path.



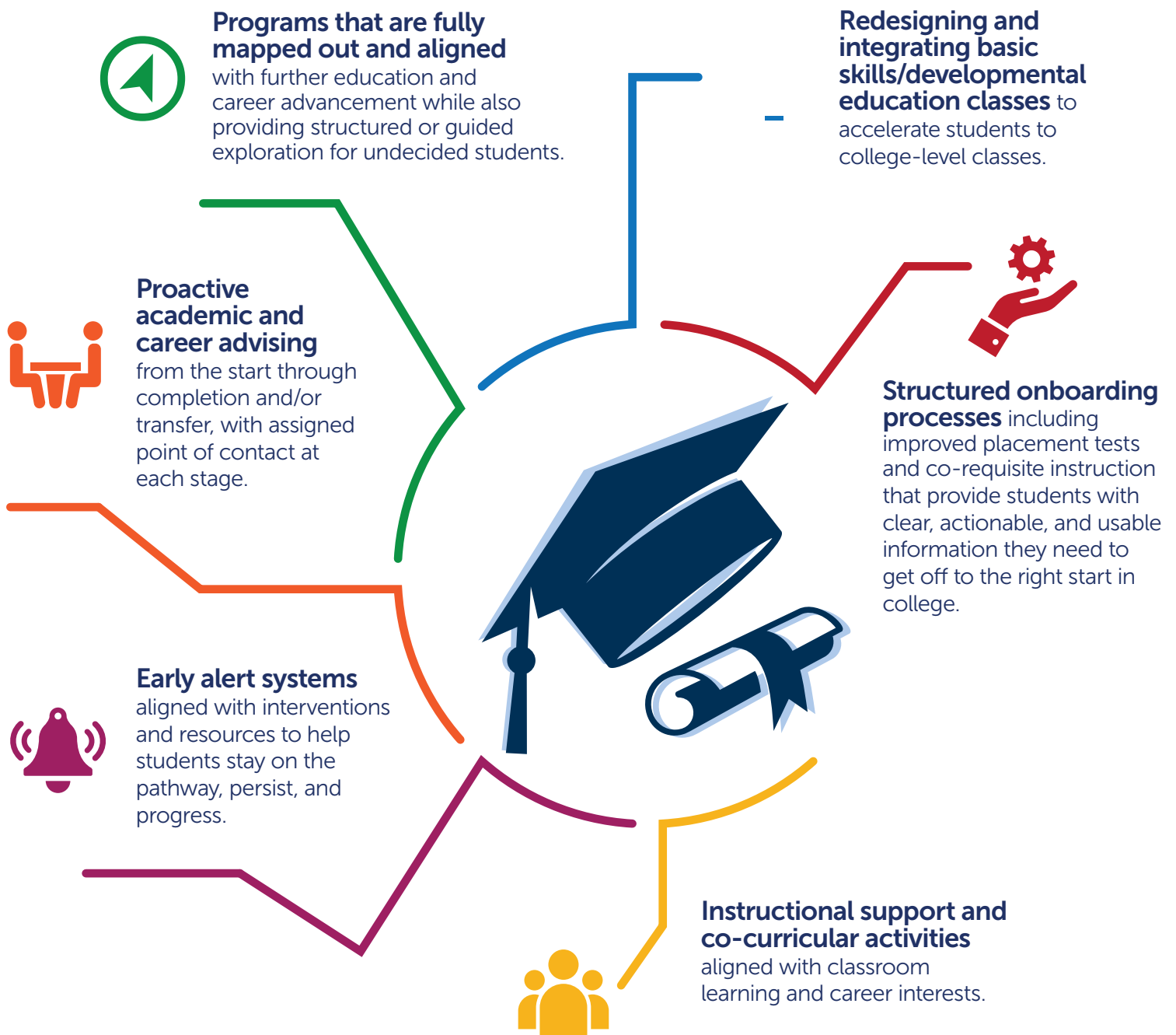
Ensure that learning is happening with intentional outcomes.

08.14.17

Guided Pathways

at California Community Colleges

Key Elements of Guided Pathways



08.14.17