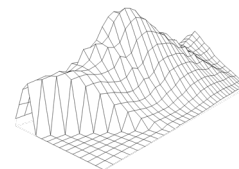


Post-2020 Census Redistricting: Orientation

GAVILAN COMMUNITY COLLEGE DISTRICT

DECEMBER 1, 2021



Shelley Lapkoff, Ph.D. & Jeanne Gobalet, Ph.D.
LAPKOFF & GOBALET DEMOGRAPHIC RESEARCH, INC.

www.demographers.com

Oakland and Saratoga, California

About

Lapkoff &
Gobalet
Demographic
Research, Inc.

LGDR

- ❑ Since 1990, we have helped redistrict dozens of California jurisdictions
- ❑ In 2015, we helped Gavilan move from at-large to by-district election of Trustees using Census 2010 data

Agenda

- **What is redistricting?**
- **Why redistrict?**
- **Current Trustee Areas (2015)**
- **Legal requirements (that demographers follow)**
- **Timeline**

What is Redistricting?

Every 10 years, community college districts that elect boards by Trustee Area must redistrict (adjust Trustee Area boundaries to have equal total populations)

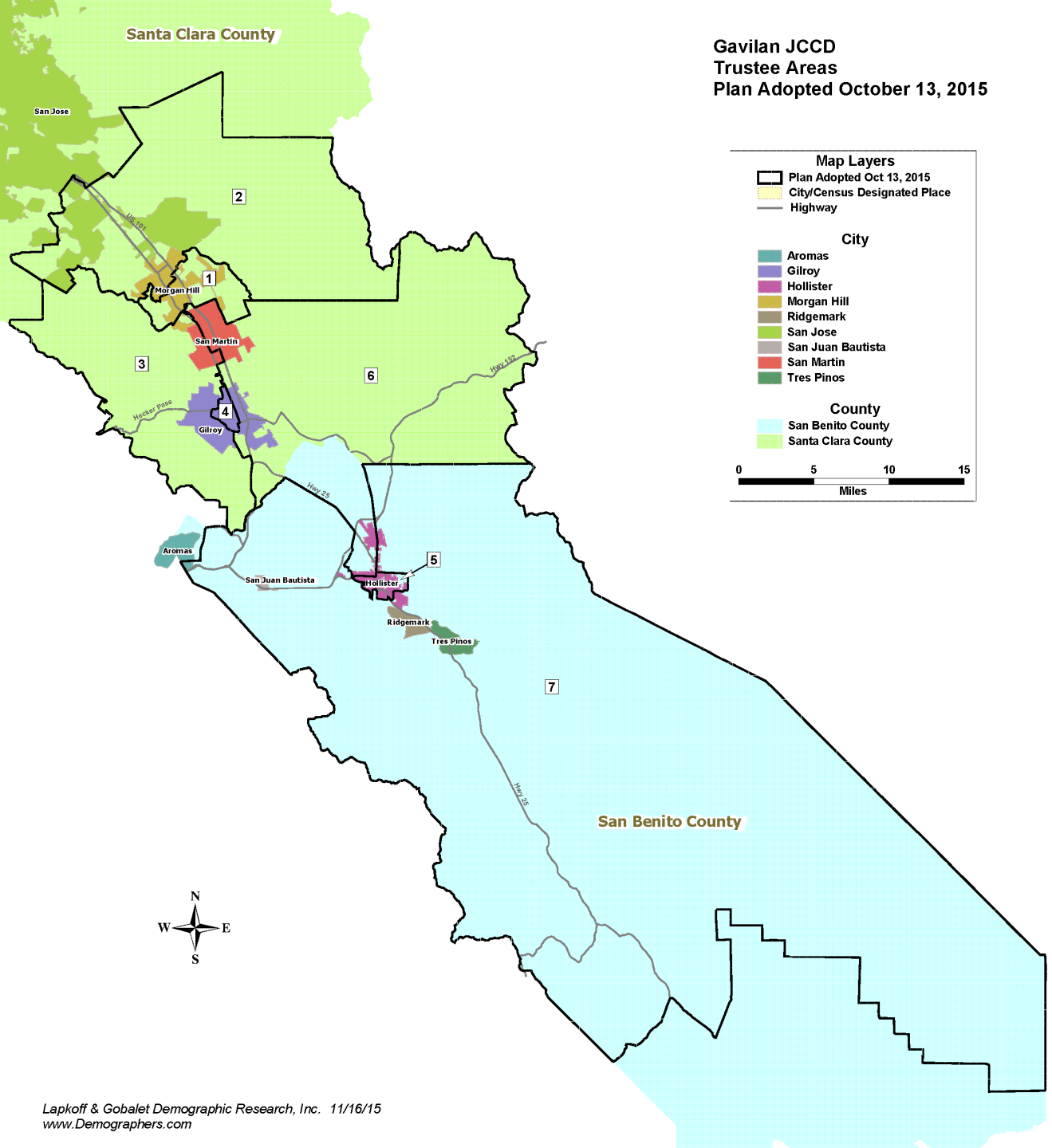
Federal and state laws apply

Each community college district must adopt new Trustee Area boundaries before March 1, 2022 (by law)

The new Trustee Areas will be used until Census 2030 data are released

Current Trustees complete their terms of office even if they no longer live in the Trustee Area they were elected to represent

Gavilan JCCD
Trustee Areas
Plan Adopted October 13, 2015



Gavilan's Current Trustee Areas

Adopted in 2015

Legal guidelines that demographers follow:

✓ Federal law & Supreme Court Decisions:

- Population equality
- Voting Rights Act
- No racial gerrymandering



✓ State Education Code

#1 Priority: Population Equality

Trustee Areas (TAs) need to be proportional in population to the number of trustees representing the TA.

Ideal District (TA) population = $1/7$ of the 2020 Census population, multiplied by the number of trustees representing that TA:

Gavilan CCD = 199,587 total population; $1/7 = 28,512$

Plan deviation = Difference between the least and most populous districts, divided by the ideal District population

Up to 10% deviation is permitted = 2,851

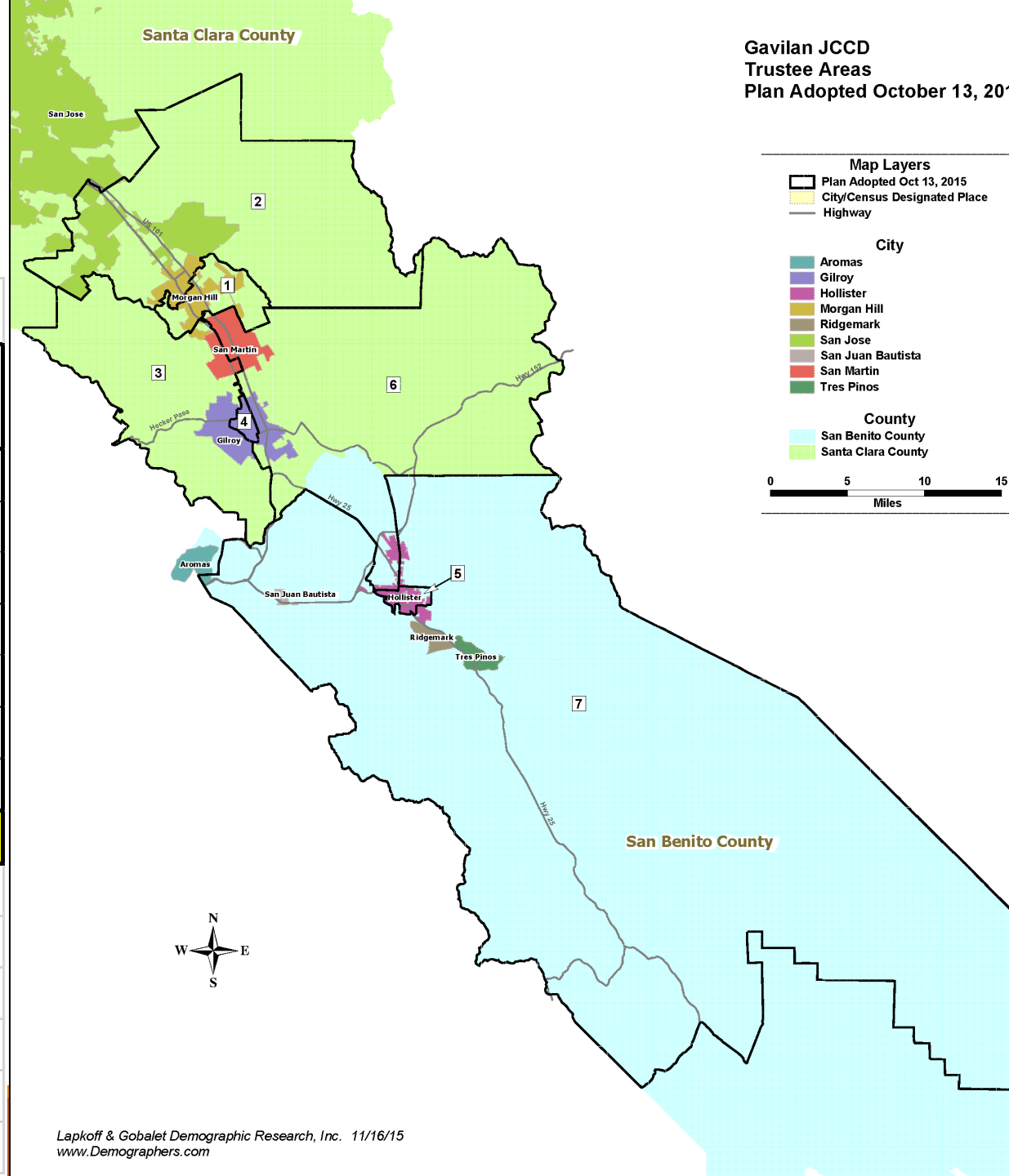
Gavilan's current Trustee Area 2020 populations are **NOT** balanced, so the boundaries need to be adjusted.

Gavilan's 2015 Trustee Areas - Population balance

Trustee Area	Census 2020 Total Population	Difference from Ideal Population	% Deviation
1	28,501	-11	0.0%
2	28,407	-105	-0.4%
3	31,182	2,670	9.4%
4	26,187	-2,325	-8.2%
5	28,831	319	1.1%
6	29,108	596	2.1%
7	27,371	-1,141	-4.0%
Total	199,587	4,995	17.5%

28,512 Ideal Population for each Trustee Area (1/7 of Total)

Official redistricting data (2020 Census adjusted by California's Statewide database to count inmates at their previous home addresses)



Federal Voting Rights Act (VRA)

- ✓ **Federal Voting Rights Act prohibits:**
 - Districts that have a racially discriminatory effect
 - Districts that came about because of discriminatory intent
- ✓ **Section 2: no local government's redistricting map can deny or abridge the right to vote on account of race, color, or membership in a language minority group.**

Gavilan College - Current Trustee Areas, 2020 Data

Gavilan's current Trustee Areas

2020 Total Population								November 2020 Registered Voters						
Trustee Area	Total Population	Latino/Hispanic	Non-Hispanic				Total	Trustee Area	Total Registered	Latino/Hispanic	Non-Hispanic			
			White	Black	Asian	Other					White	Black	Asian	Other
Total Population Percentages								% of Registered Voters						
1	28,501	33%	46%	3%	15%	4%	100%	1	18,301	22%	n/a	n/a	9%	n/a
2	28,407	33%	39%	3%	23%	4%	100%	2	17,151	23%	n/a	n/a	15%	n/a
3	31,182	36%	43%	2%	15%	4%	100%	3	20,272	26%	n/a	n/a	9%	n/a
4	26,187	63%	24%	2%	8%	3%	100%	4	13,441	45%	n/a	n/a	6%	n/a
5	28,831	68%	24%	1%	4%	3%	100%	5	14,630	52%	n/a	n/a	3%	n/a
6	29,108	68%	22%	1%	6%	3%	100%	6	13,383	48%	n/a	n/a	6%	n/a
7	27,371	50%	41%	1%	5%	3%	100%	7	16,901	36%	n/a	n/a	3%	n/a
Total	199,587	50%	34%	2%	11%	3%	100%	Total	114,079	34%	n/a	n/a	8%	n/a
Ideal	28,512													

2020 18+ Population (Voting Age Population)								November 2020 Actual Voters						
Trustee Area	Total 18+ Population	Latino/Hispanic	Non-Hispanic				Total	Trustee Area	Total Voted	Latino/Hispanic	Non-Hispanic			
			White	Black	Asian	Other					White	Black	Asian	Other
18+ Population Percentages								% of Actual Voters						
1	21,823	30%	49%	3%	14%	4%	100%	1	15,765	21%	n/a	n/a	9%	n/a
2	21,574	29%	42%	3%	23%	4%	100%	2	14,488	21%	n/a	n/a	15%	n/a
3	23,985	33%	46%	3%	15%	3%	100%	3	17,399	24%	n/a	n/a	9%	n/a
4	19,233	59%	27%	2%	9%	3%	100%	4	10,678	43%	n/a	n/a	6%	n/a
5	20,915	64%	28%	1%	4%	3%	100%	5	11,573	50%	n/a	n/a	3%	n/a
6	21,510	63%	26%	1%	6%	3%	100%	6	10,325	45%	n/a	n/a	6%	n/a
7	21,155	46%	45%	1%	5%	3%	100%	7	14,056	33%	n/a	n/a	3%	n/a
Total	150,195	46%	38%	2%	11%	3%	100%	Total		32%	n/a	n/a	8%	n/a

Trustee Area	Total	Citizens of Voting Age (CVAP) Percentages						Trustee Area	Total	Difference	% Deviation
		Latino/Hispanic	White	Black	Asian	Other	Total				
1	20,338	25%	54%	3%	13%	5%	100%	1	28,501	-11	0.0%
2	18,833	24%	50%	2%	21%	3%	100%	2	28,407	-105	-0.4%
3	20,246	29%	54%	2%	11%	4%	100%	3	31,182	2,670	9.4%
4	15,683	54%	33%	1%	7%	5%	100%	4	26,187	-2,325	-8.2%
5	17,218	56%	35%	1%	3%	4%	100%	5	28,831	319	1.1%
6	15,261	52%	34%	1%	7%	5%	100%	6	29,108	596	2.1%
7	17,726	37%	53%	1%	5%	5%	100%	7	27,371	-1,141	-4.0%
Total	125,305	38%	46%	2%	10%	5%	100%	Total	199,587	4,995	17.5%

State Law for School Districts

California's Education Code says the following criteria may be taken into account. No order of priority is given.

“...give consideration to the following factors:

(1) Topography

(2) Geography

(3) Cohesiveness, contiguity, integrity, and compactness of territory

(4) Community of interests of the trustee areas”

Communities of Interest (COIs) - Examples

COIs are contiguous areas where people share common social and economic interests and should be in a single Trustee Area or be considered when drawing Trustee Area boundaries:

- ☐ K-12 school districts**
- ☐ Recognized neighborhoods**
- ☐ Cities and unincorporated communities**
- ☐ Areas with similar living standards, including similar income and educational levels**

Questions?

Appendix 1

Redistricting Terms Packing, Cracking, and Gerrymandering

Definitions

Redistricting	Adjusting election district boundaries to equalize total populations. Required after each new U.S. Census.
Community of interest	Geographical area where people share common social and economic interests and should be in a single District or be considered when drawing boundaries.
Population equality	Districts need to have (almost) equal Census 2020 populations
Voting Rights Act	Federal law that protects minority voting rights
Gerrymander	To design odd-shaped election districts to achieve a purpose like reducing minority voting power or increasing a political party's representation
Deviation/plan deviation	A measure of how equal the Districts' total populations are
Redistricting criteria	Legally required things to consider when drawing boundaries

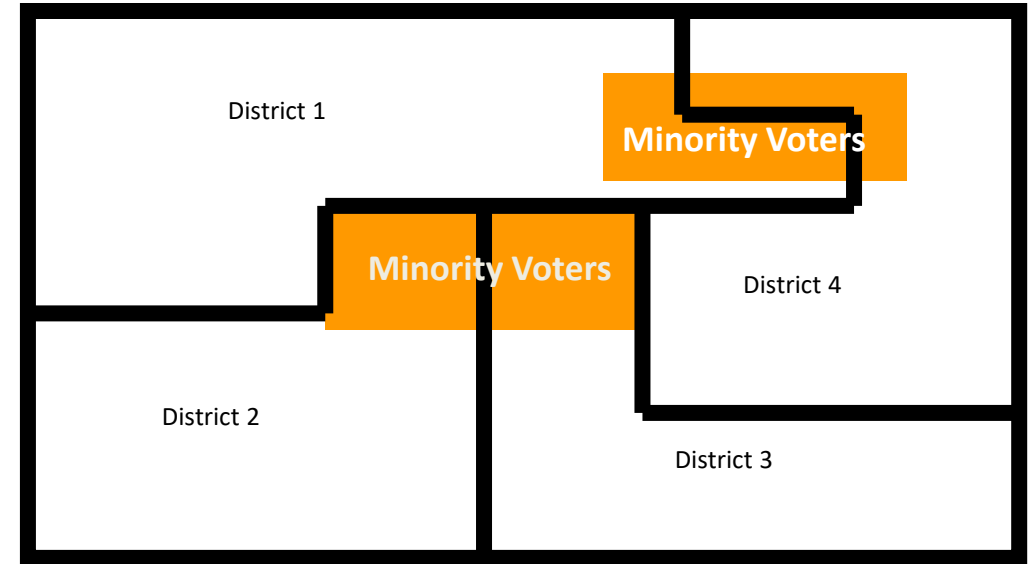
The Federal Voting Rights Act

No “Cracking” or “Packing”
orange blocks show split
minority communities

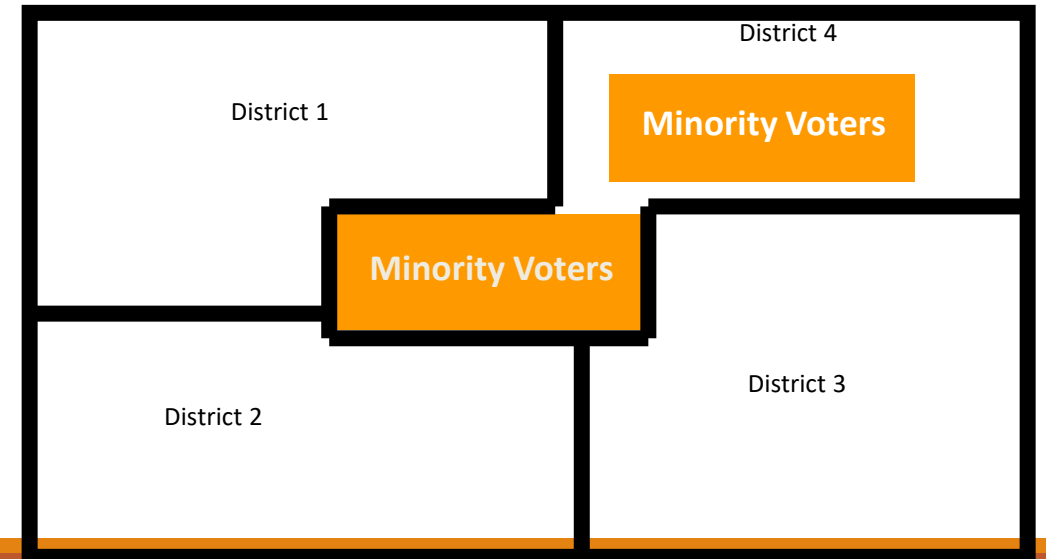
“‘Packing’ refers to the practice of filling a district with a supermajority of a given group or political party. ‘Cracking’ involves the splitting of a group or party among several districts to deny that group or party a majority in any of those districts.”

-*Vieth v. Jubelirer*,
541 U.S. 267, 286 n.7 (2004)

Cracking



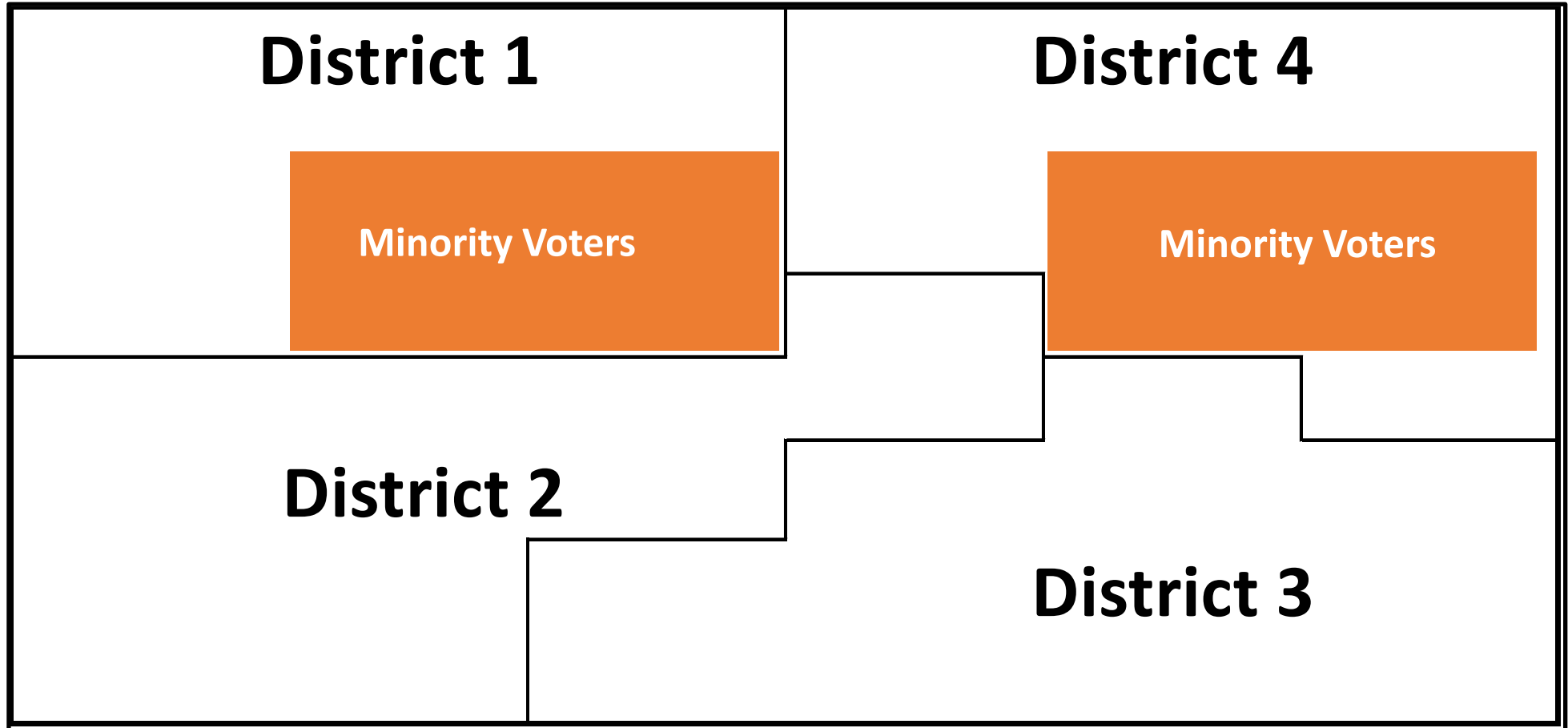
Packing



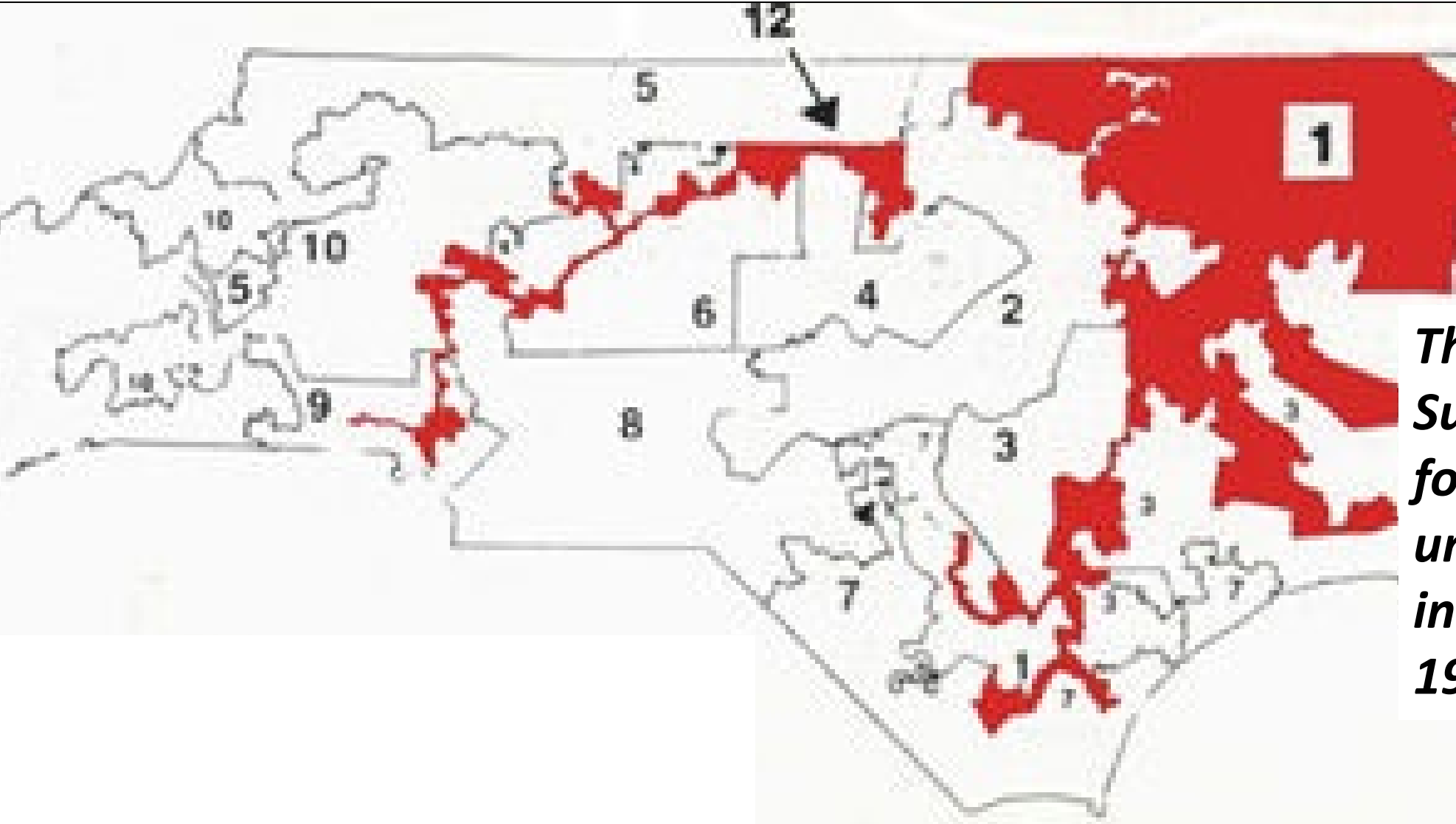
Best Practice:

Each orange block representing minority voters is intact and in a separate election district.

The Federal Voting Rights Act



Racial Gerrymandering is not Permitted: North Carolina's proposed Congressional Districts after Census 1990

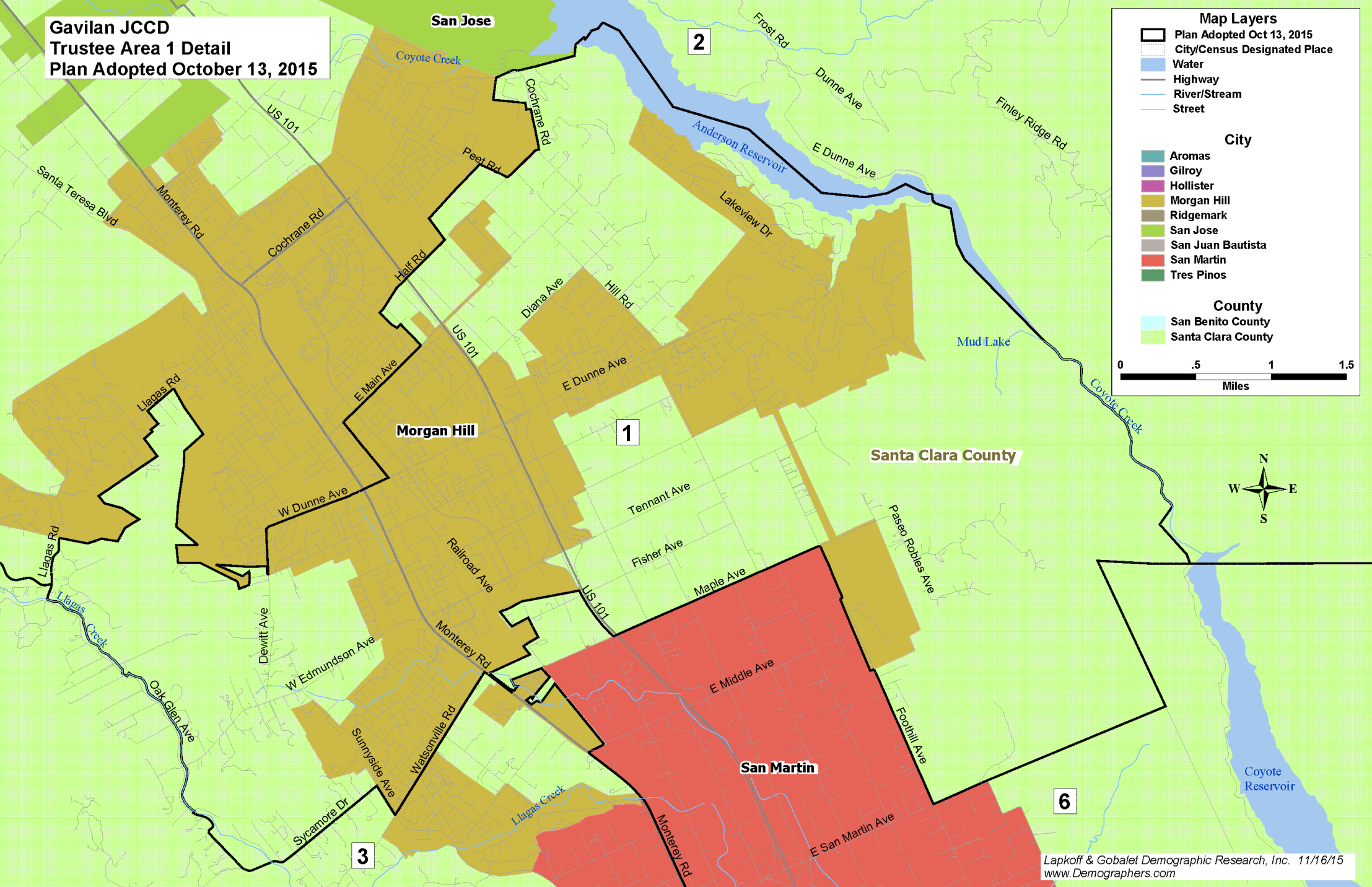


The U.S. Supreme Court found District 12 unconstitutional in Shaw v. Reno, 1993

Appendix 2

Detailed Map of Each Trustee Area

**Gavilan JCCD
Trustee Area 1 Detail
Plan Adopted October 13, 2015**



Map Layers

- Plan Adopted Oct 13, 2015
- City/Census Designated Place
- Water
- Highway
- River/Stream
- Street

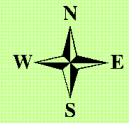
City

- Aromas
- Gilroy
- Hollister
- Morgan Hill
- Ridgemark
- San Jose
- San Juan Bautista
- San Martin
- Tres Pinos

County

- San Benito County
- Santa Clara County

0 .5 1 1.5
Miles



Trustee Area 1

Trustee Area 3

Gavilan JCCD
Trustee Area 3 Detail
Plan Adopted October 13, 2015

Map Layers

- Plan Adopted Oct 13, 2015
- City/Census Designated Place
- Water
- Highway
- River/Stream
- Street

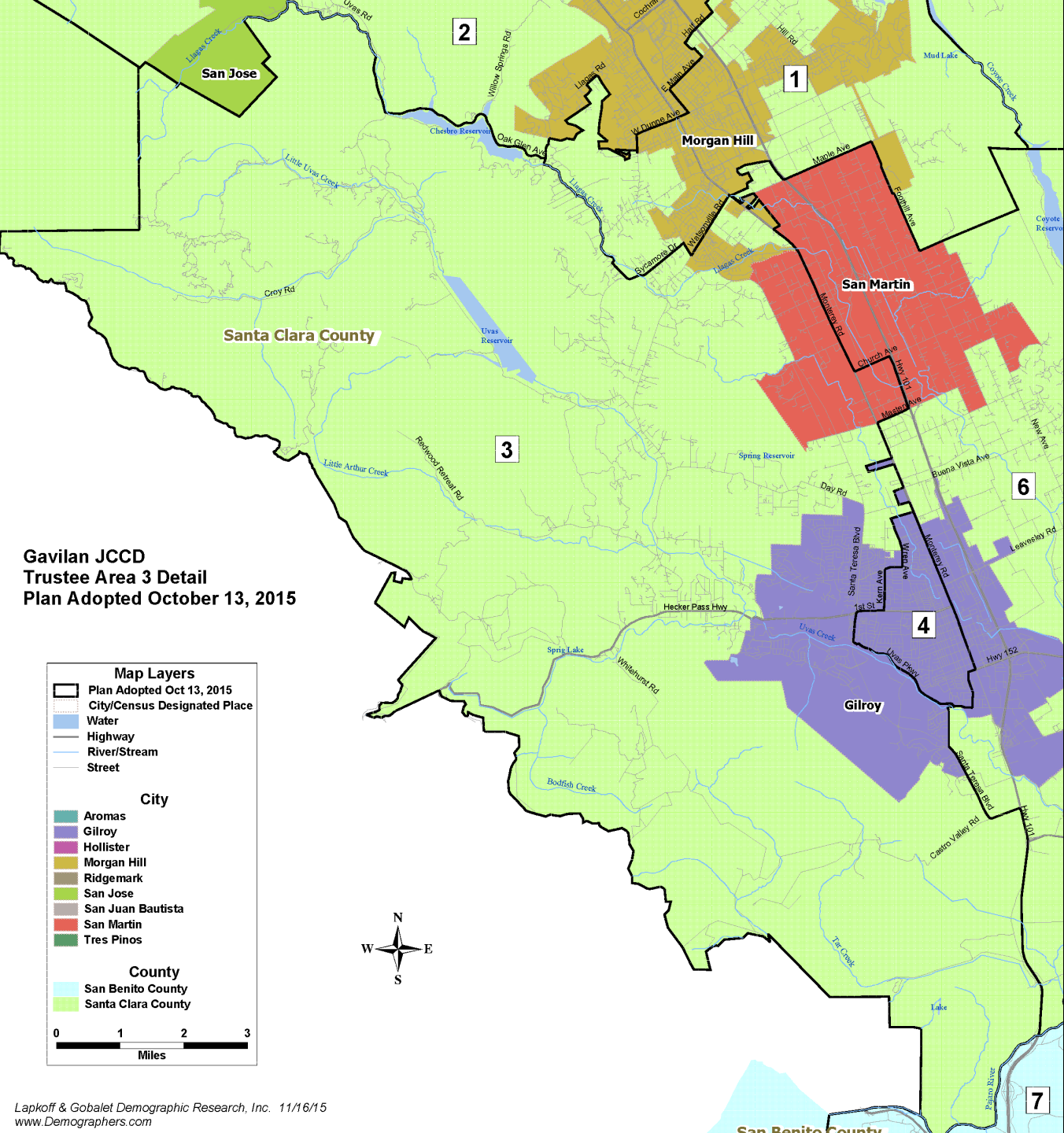
City

- Aromas
- Gilroy
- Hollister
- Morgan Hill
- Ridgemark
- San Jose
- San Juan Bautista
- San Martin
- Tres Pinos

County

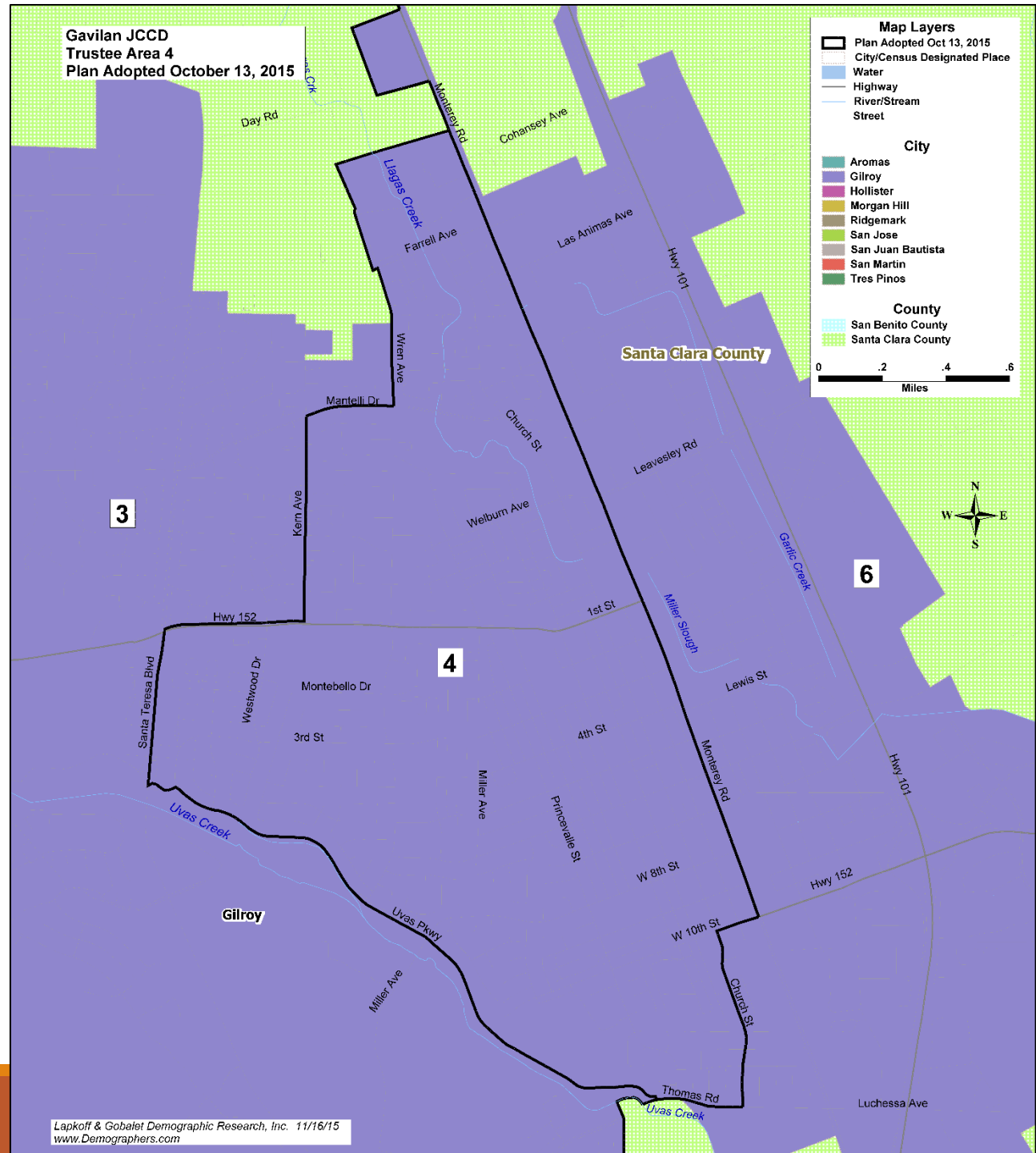
- San Benito County
- Santa Clara County

0 1 2 3
Miles

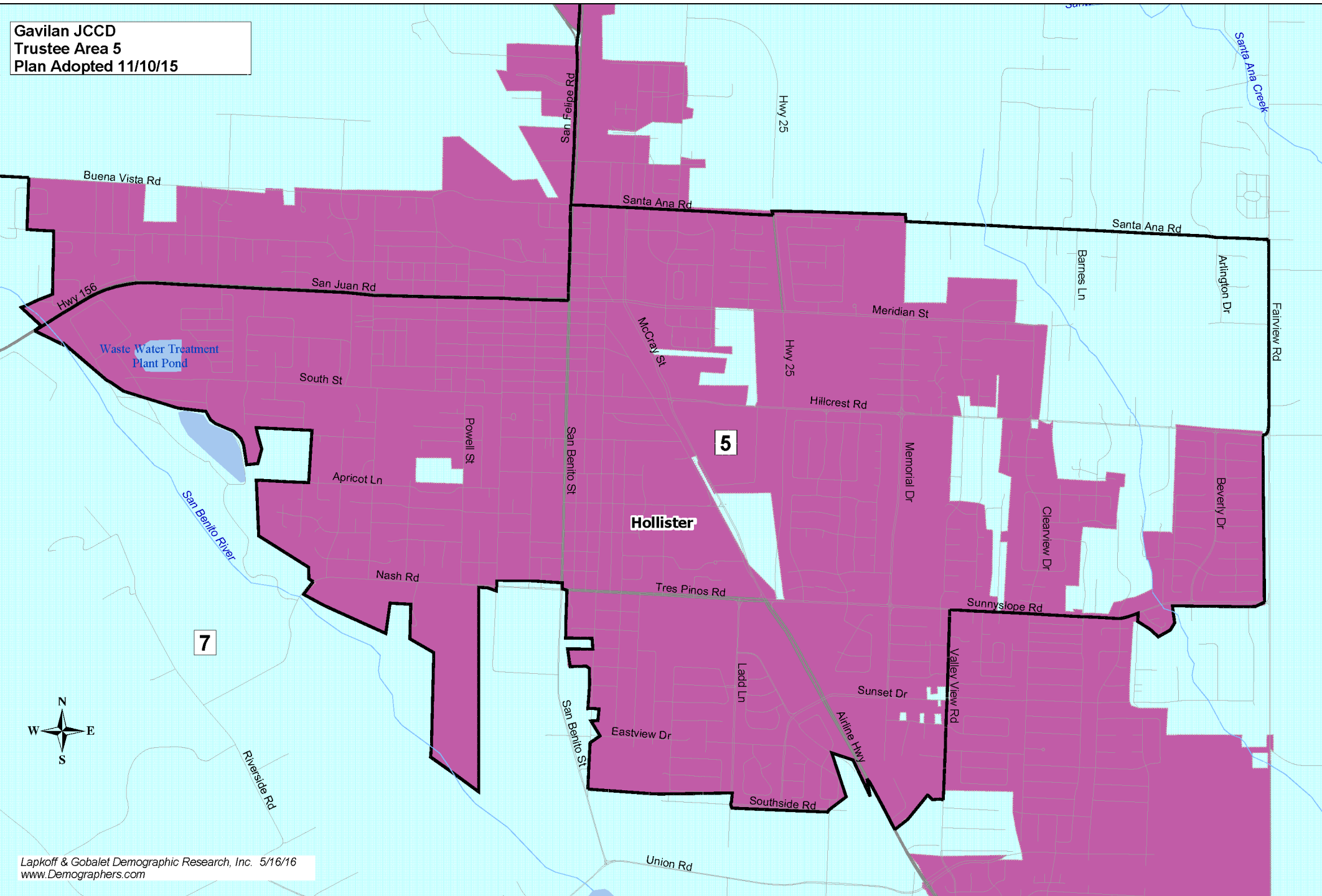


Trustee Area 4

Gavilan JCCD
Trustee Area 4
Plan Adopted October 13, 2015



Trustee Area 5



Trustee Area 6

