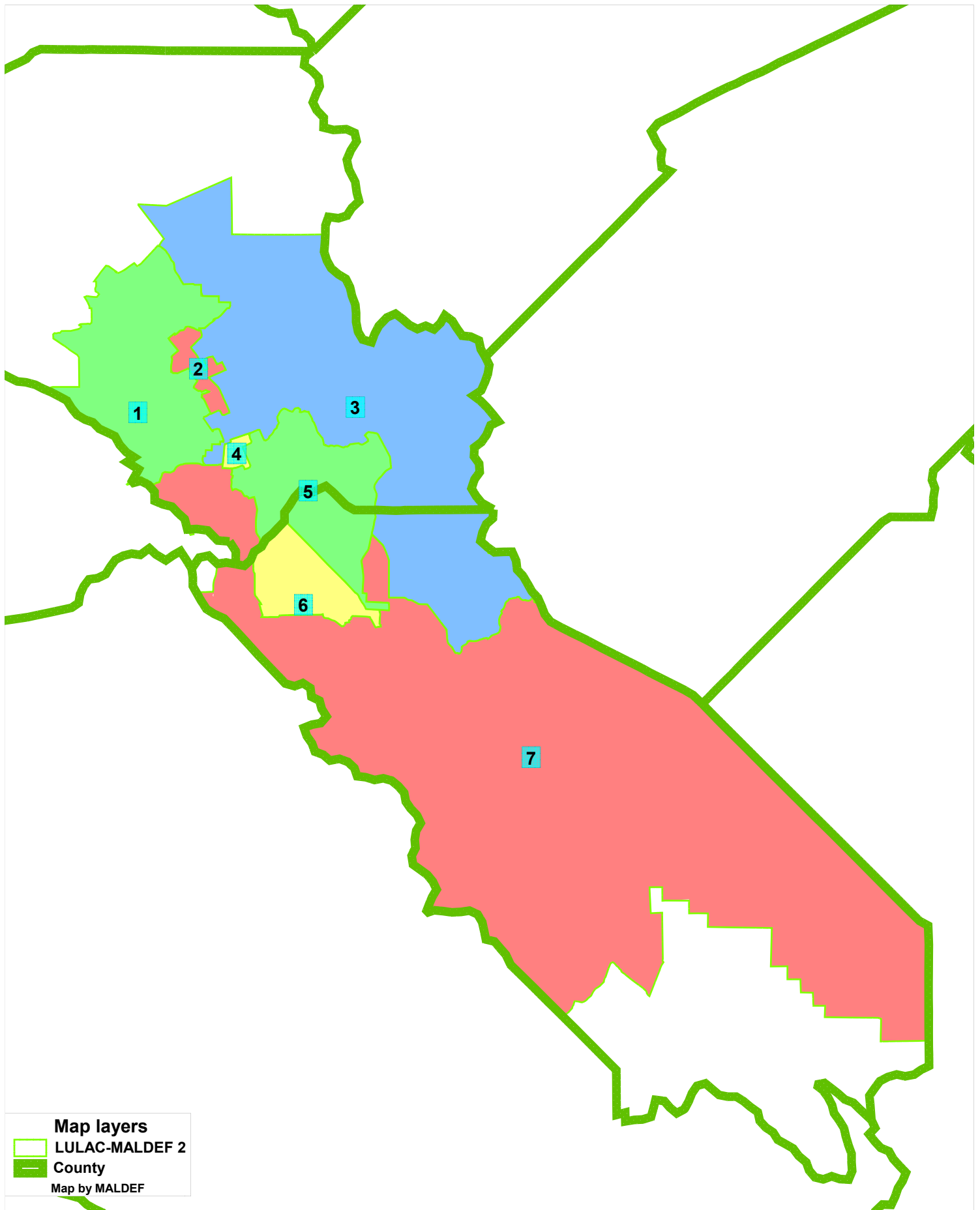
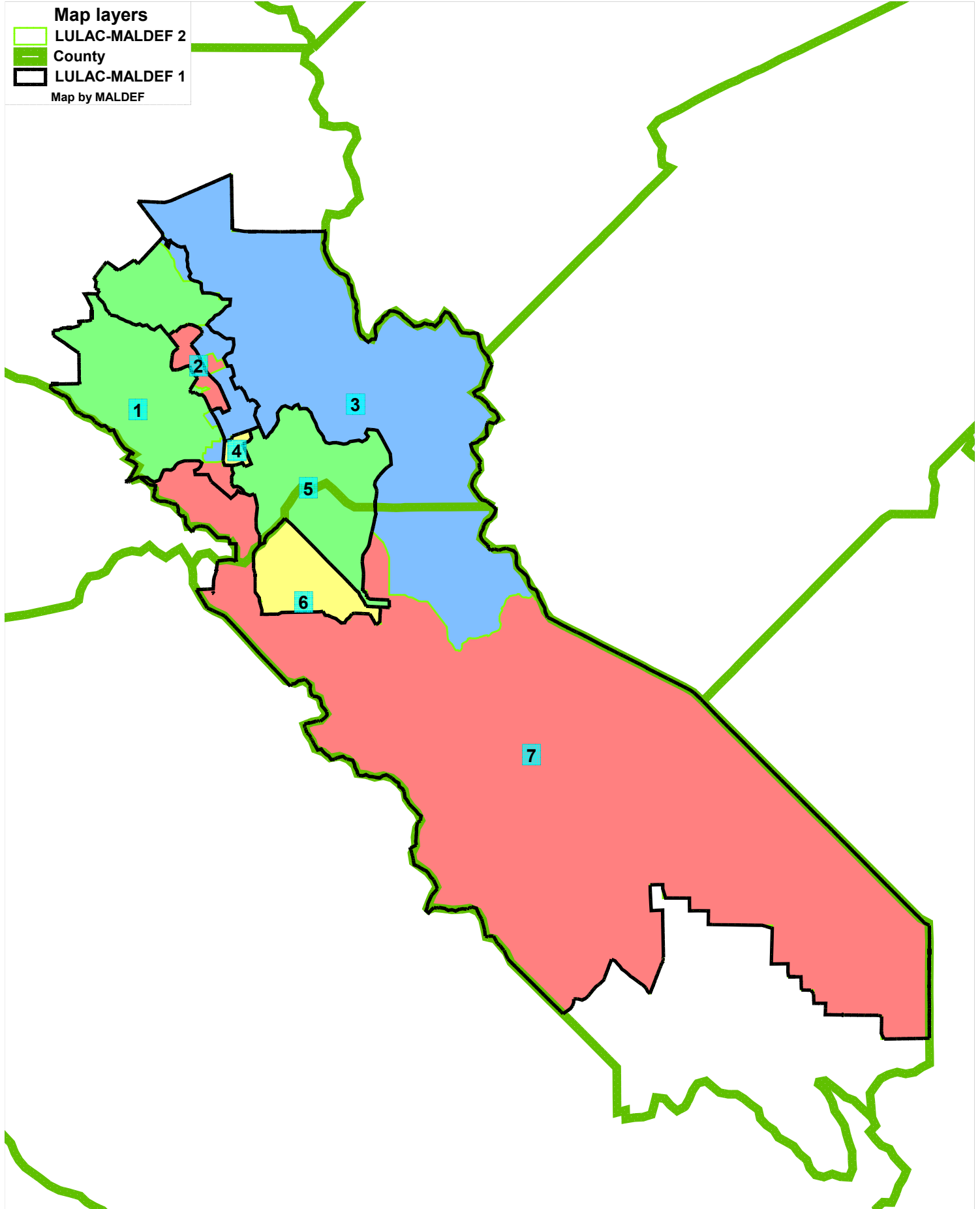


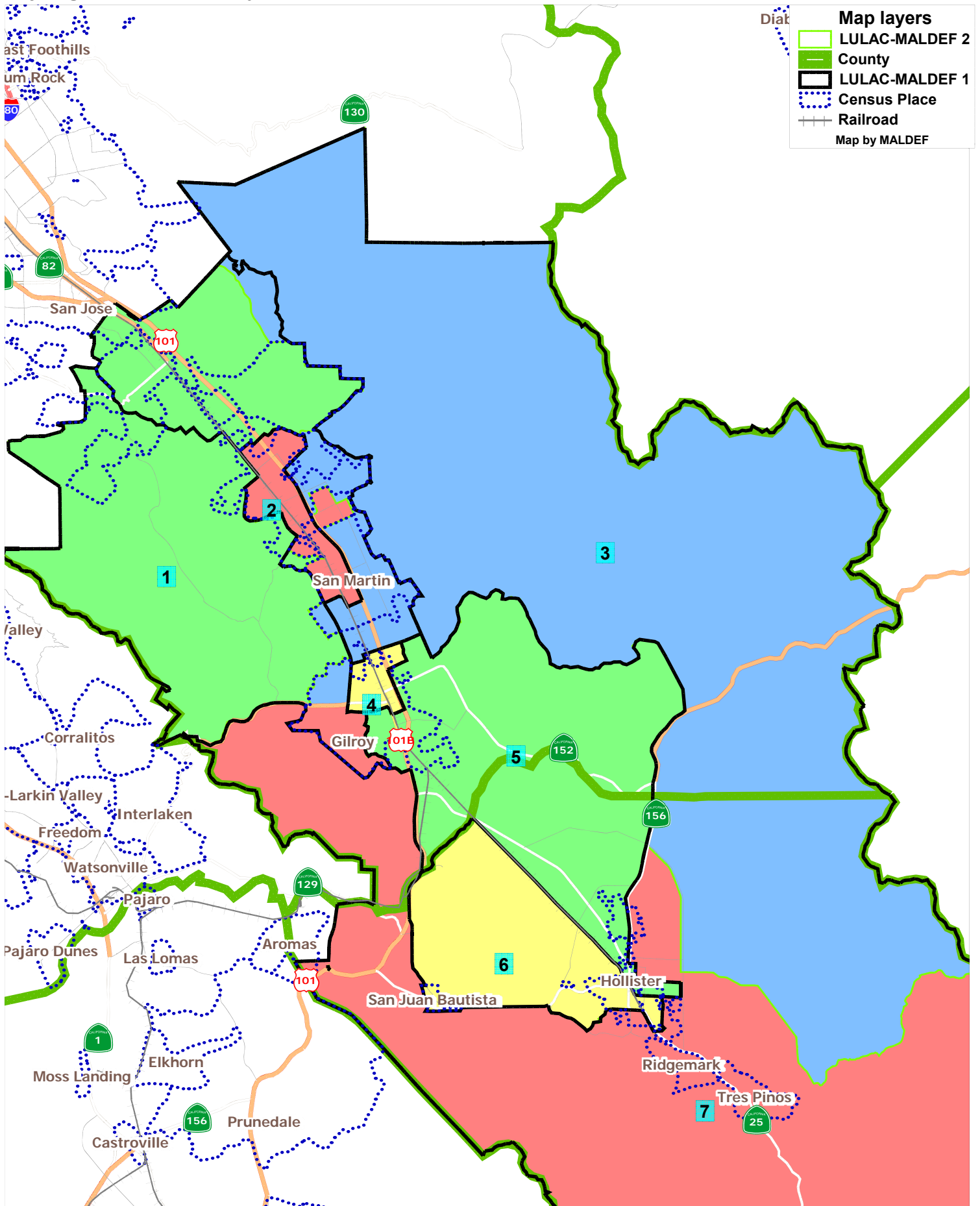
# Gavilan CCD: LULAC-MALDEF Plan 2



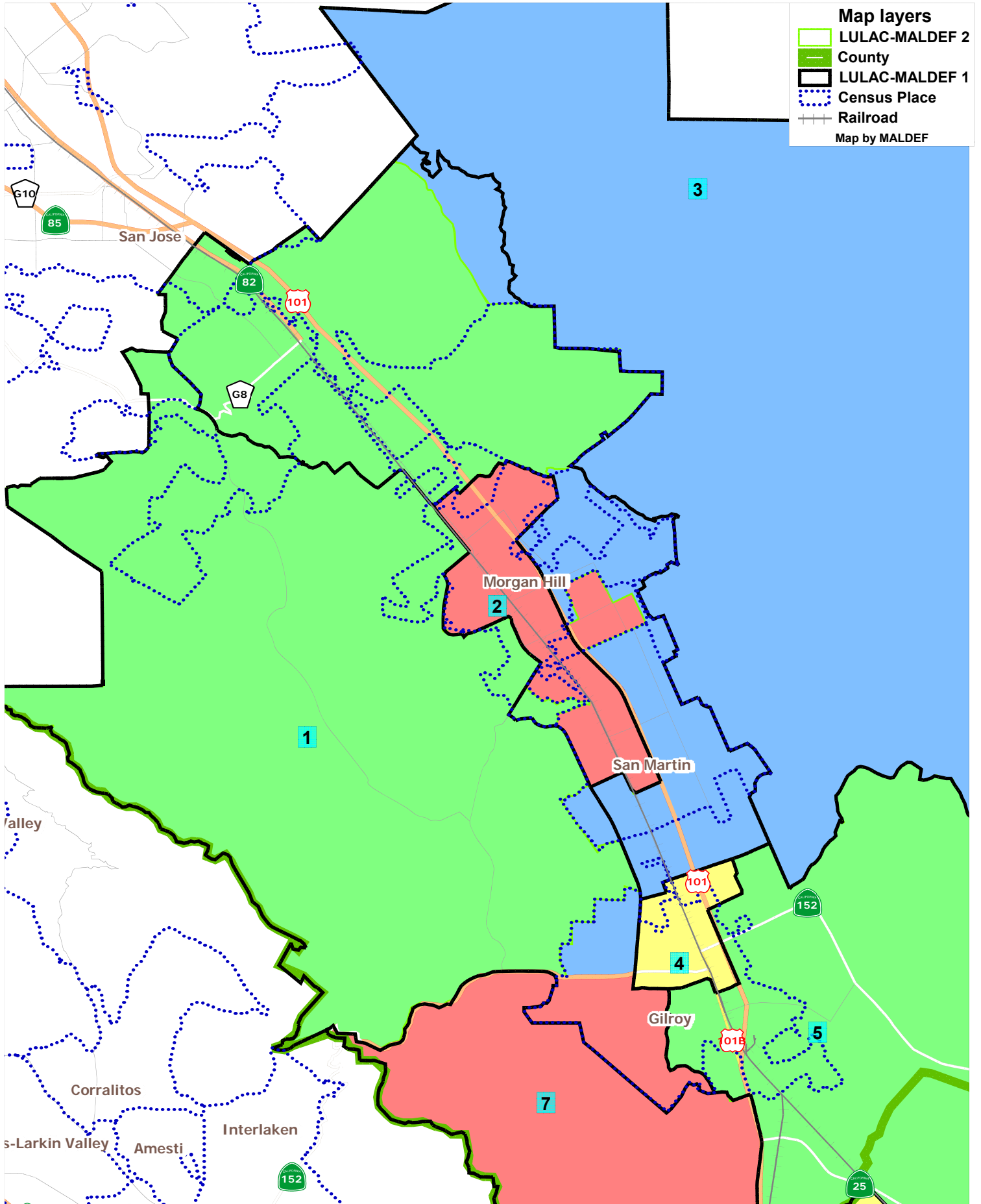
Gavilan CCD: LULAC-MALDEF Plan 2  
with LULAC-MALDEF Plan 1



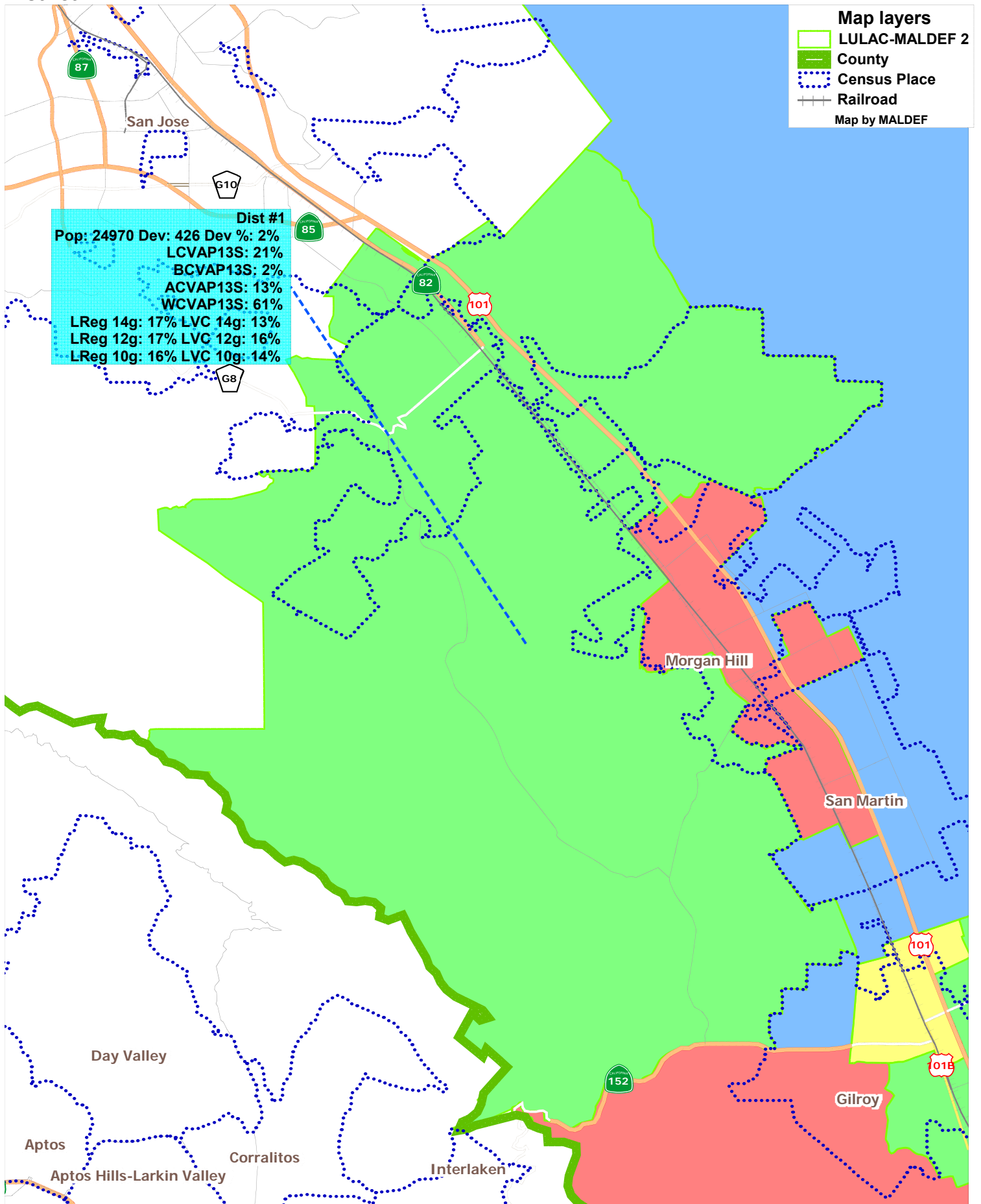
# Gavilan CCD: LULAC-MALDEF Plan 2 North Detail with LULAC-MALDEF Plan 1



# Gavilan CCD: LULAC-MALDEF Plan 2 MHUSD Detail with LULAC-MALDEF Plan 1

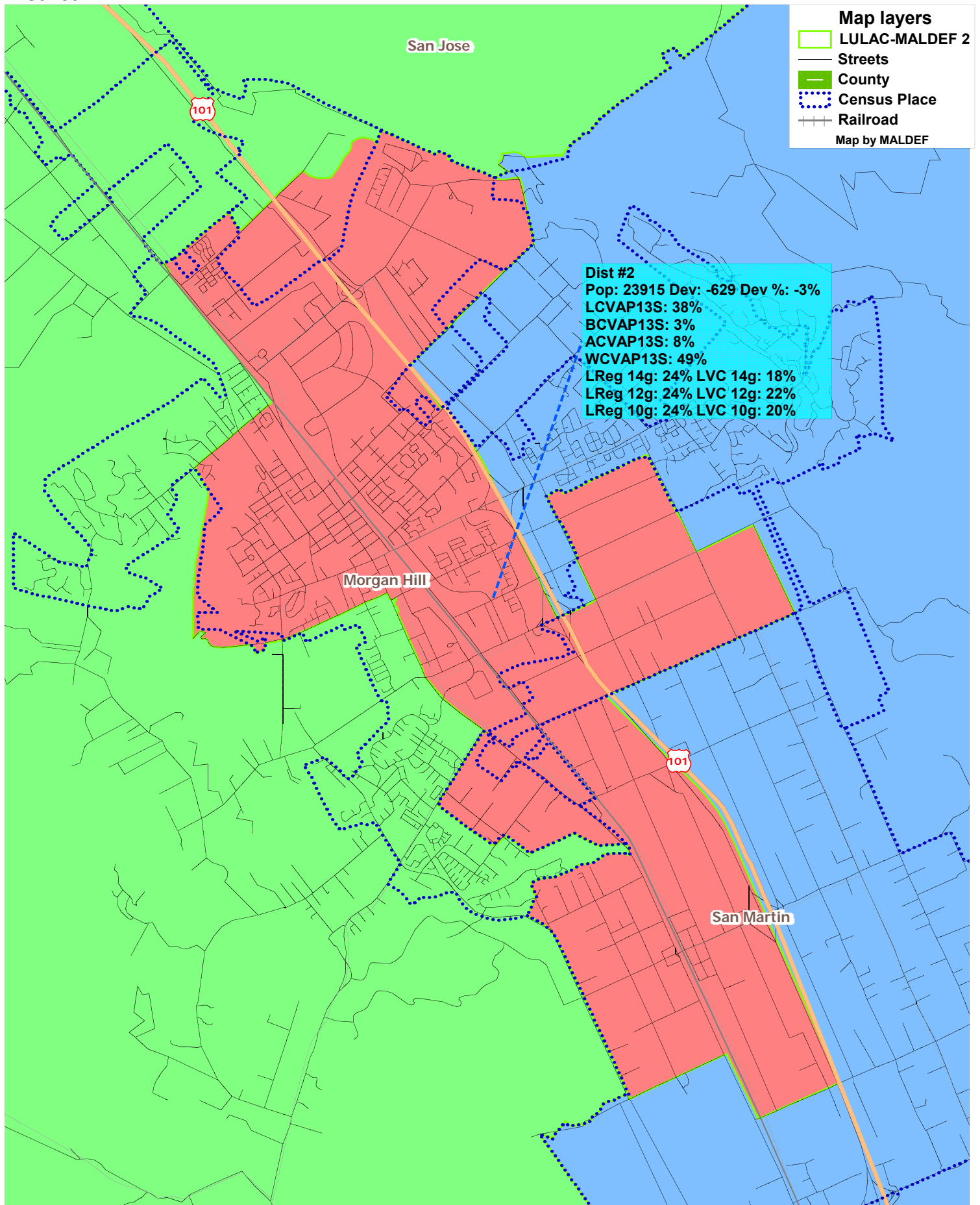


**Gavilan CCD: LULAC-MALDEF Plan 2  
District 1**



Data Sources: CVAP, Latino Registration (LReg), and Latino Votes Cast (LVC) data from the Statewide Database  
 Population data from the 2010 Census

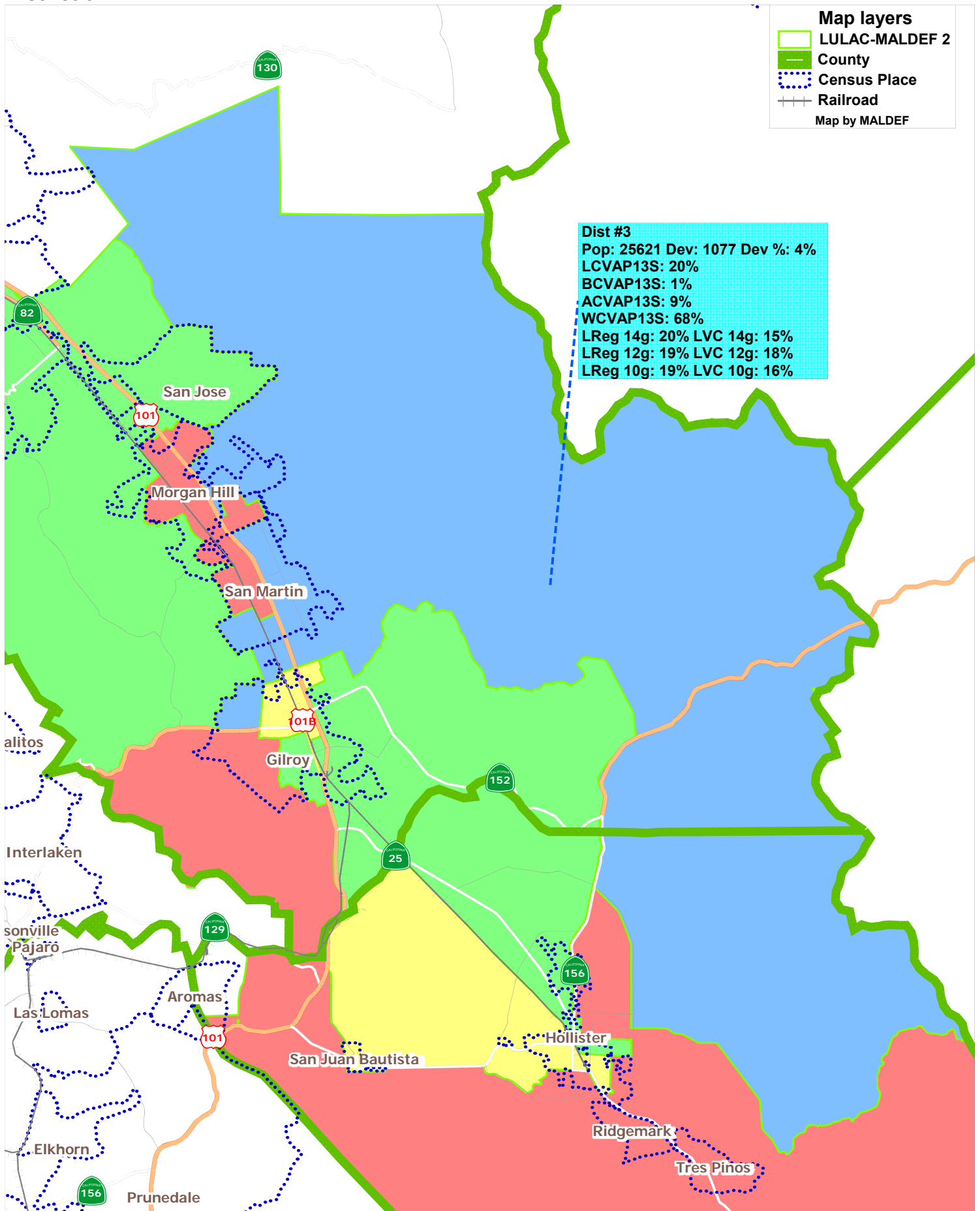
# Gavilan CCD: LULAC-MALDEF Plan 2 District 2



Data Sources: CVAP, Latino Registration (LReg), and Latino Votes Cast (LVC) data from the Statewide Database  
Population data from the 2010 Census

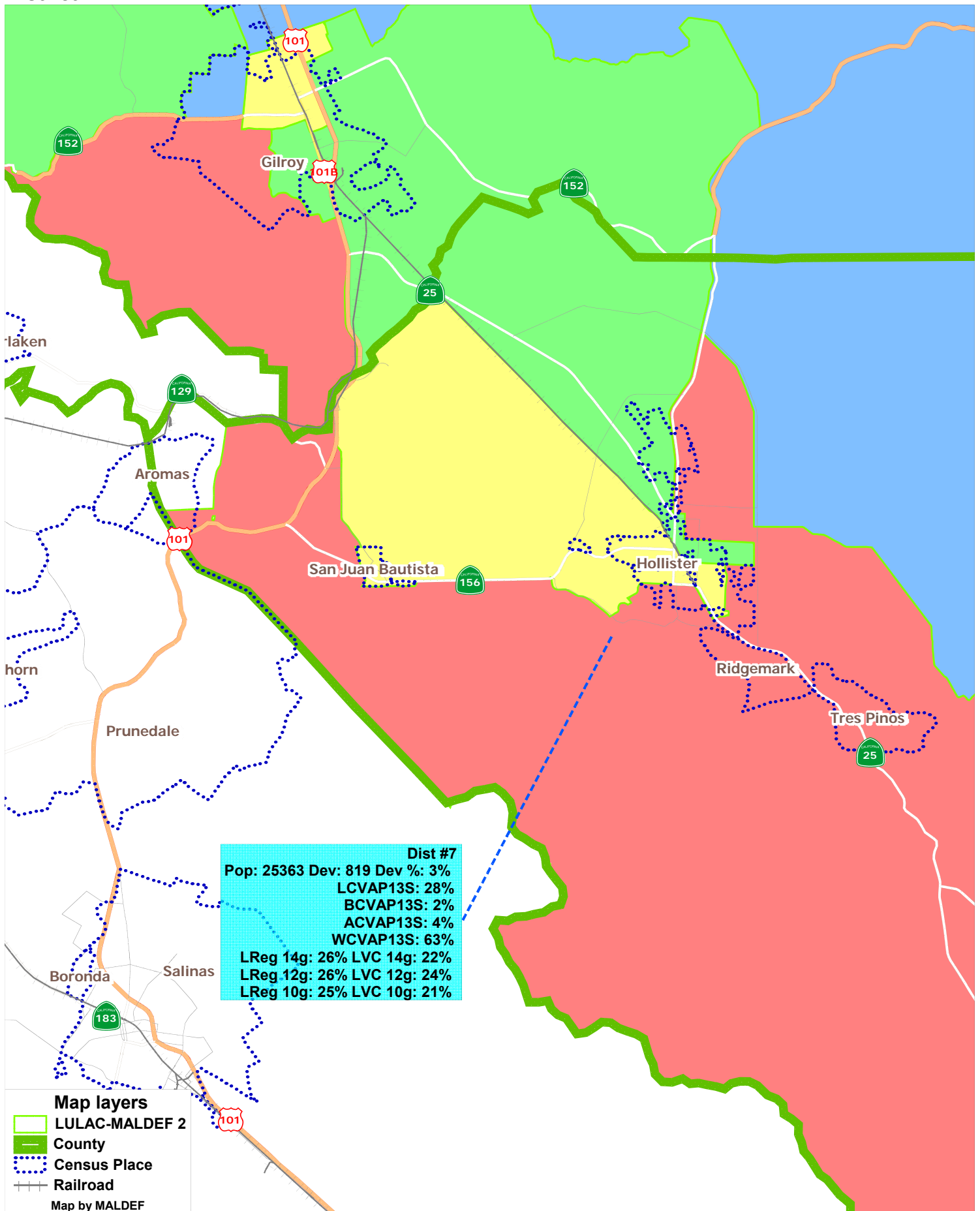


**Gavilan CCD: LULAC-MALDEF Plan 2  
District 3**



Data Sources: CVAP, Latino Registration (LReg), and Latino Votes Cast (LVC) data from the Statewide Database  
 Population data from the 2010 Census

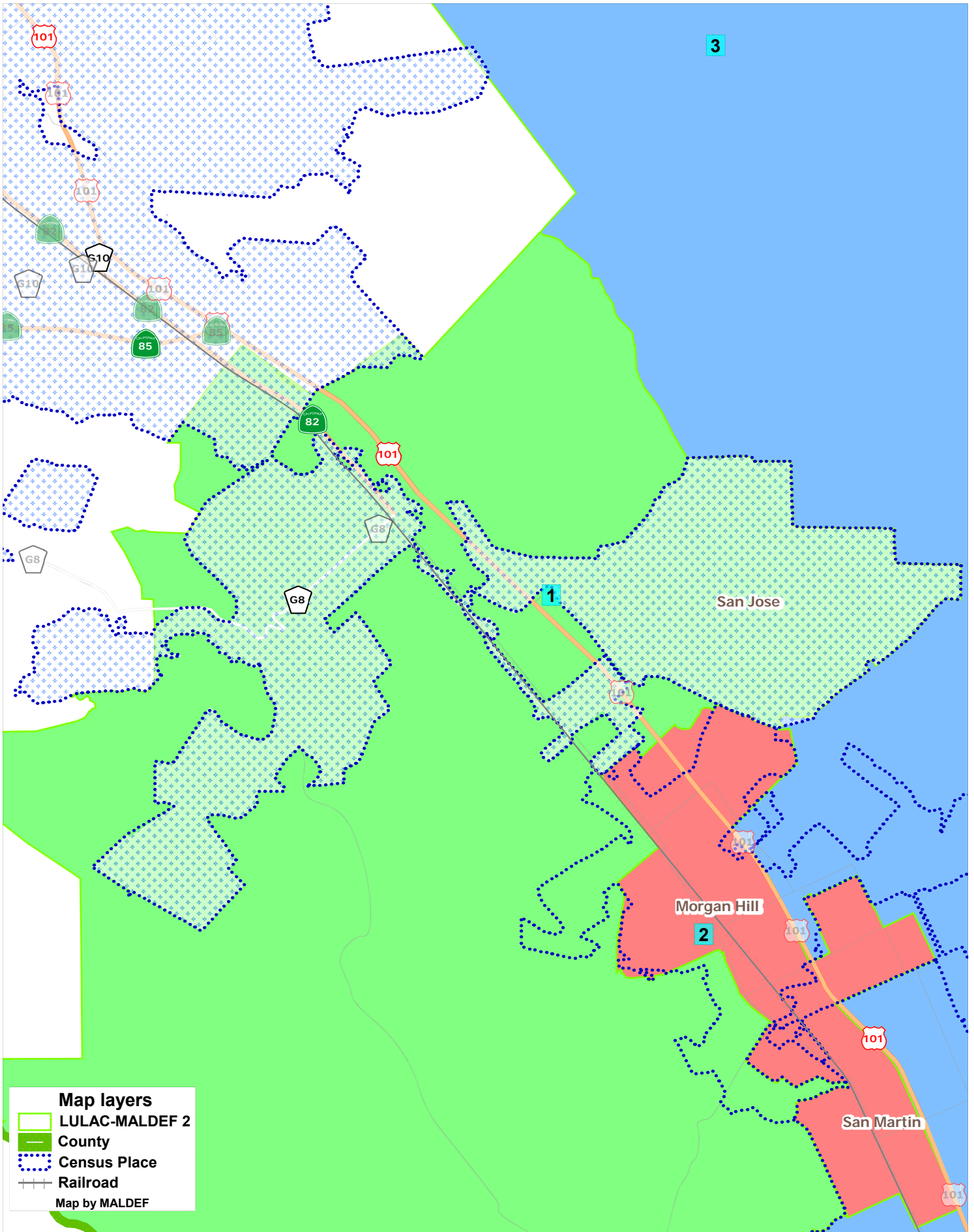
**Gavilan CCD: LULAC-MALDEF Plan 2  
District 7**



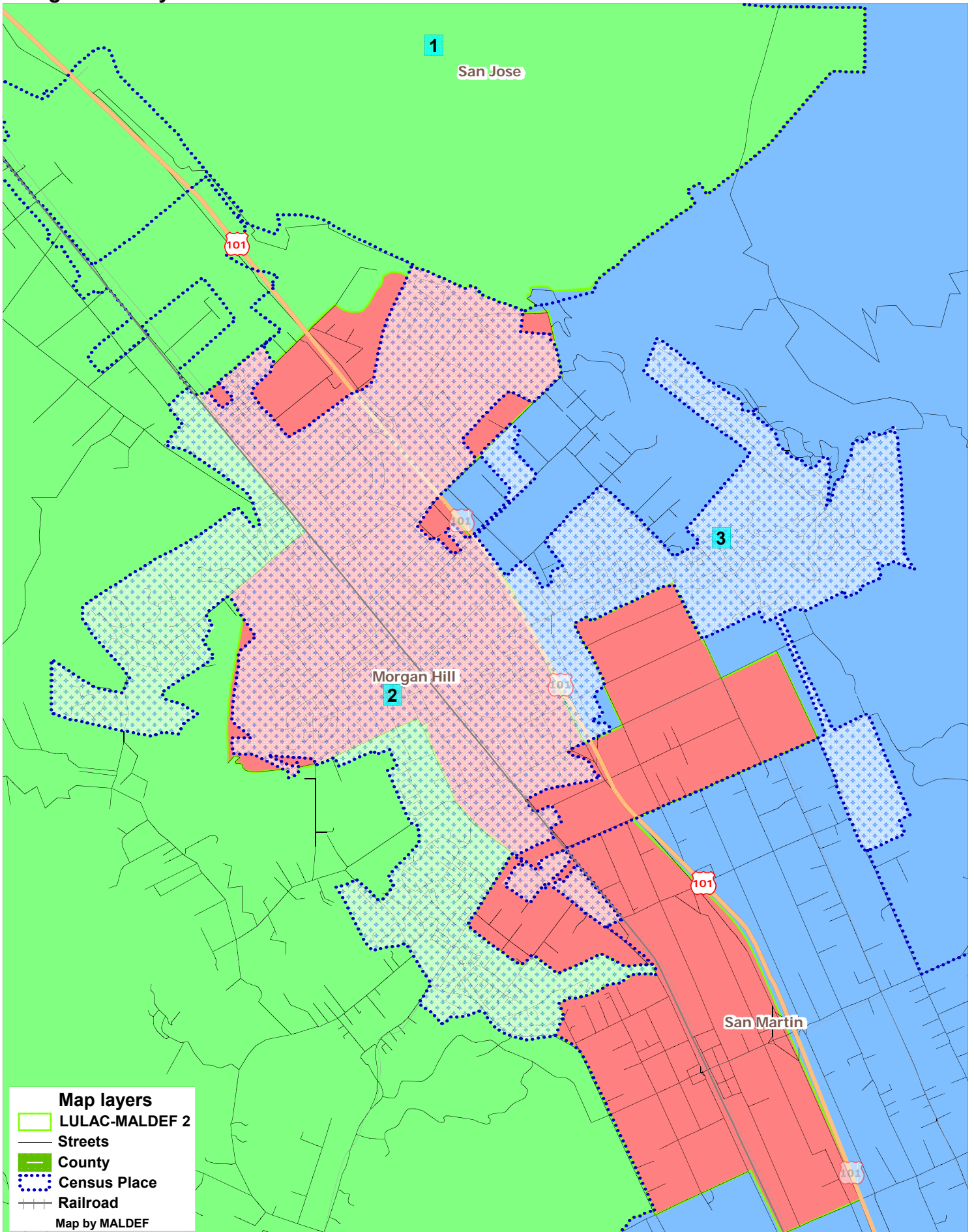
Data Sources: CVAP, Latino Registration (LReg), and Latino Votes Cast (LVC) data from the Statewide Database  
Population data from the 2010 Census



# Gavilan CCD: LULAC-MALDEF Plan 2 South San Jose

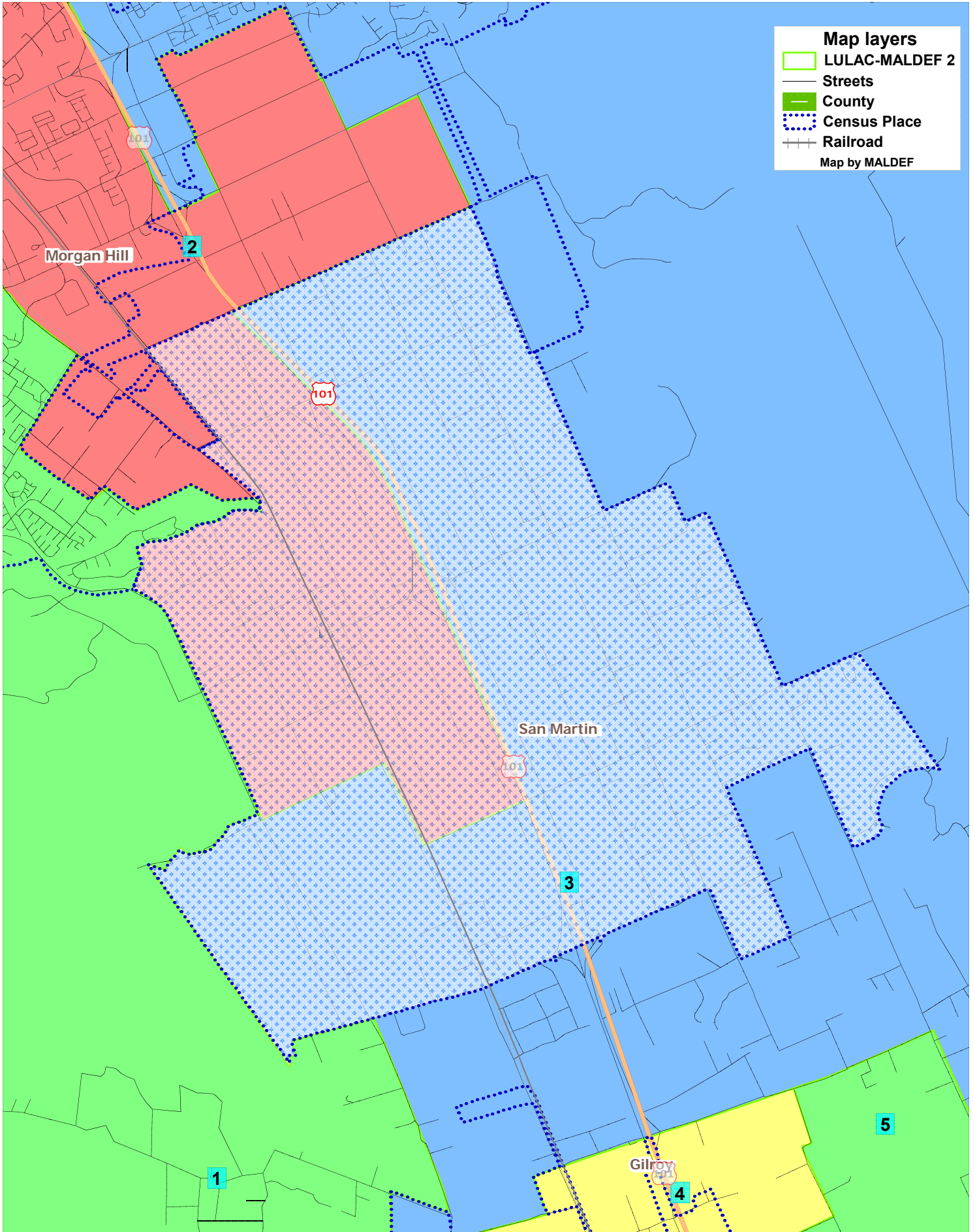


Gavilan CCD: LULAC-MALDEF Plan 2  
Morgan Hill City





# Gavilan CCD: LULAC-MALDEF Plan 2 San Martin



# Gavilan CCD: LULAC-MALDEF Plan 2 Gilroy

