

Demographer's Report on  
**Draft Trustee Area Plans**  
Gavilan Joint Community College District

October 13, 2015

*Jeanne Gobalet, PhD*  
*Lapkoff & Gobalet*  
*Demographic Research, Inc.*  
*[www.Demographers.com](http://www.Demographers.com)*



# **Board and community members have said that it is important that districting plans:**

- **Meet the population equality requirement (plan deviation 10% or lower)**
- **Have three trustee areas with Hispanic Citizen Voting Age Population (HCVAP) majorities**

# **Board and community members have said that it is important that districting plans:**

- **Respect various communities of interest, including:**
  - **Latinos**
  - **The San Juan Bautista/Aromas-San Juan Unified School District**
  - **San Jose/Coyote/northern Morgan Hill**
  - **San Benito County has either**
    - **Two complete trustee areas plus a part of a third (with some San Benito County population but mostly in Santa Clara County), *or***
    - **Three trustee areas with most of the population in San Benito County, but some population in Santa Clara County**

# **Before September 8, the Board and public reviewed four draft districting plans:**

**Draft Plans I, II, III  
LULAC/MALDEF Plan 1**

## **There are two additional plans:**

**LULAC/MALDEF Plan 2 – submitted Sept. 8**

**Draft Plan IV – developed in response to comments made at the Sept. 8 Board meeting**

# **LULAC/MALDEF Plan 2:** Submitted 9/8/15 by Mr. Steven A. Ochoa, the Mexican American Legal Defense and Educational Fund (MALDEF) National Redistricting Coordinator (re-created by LGDR)

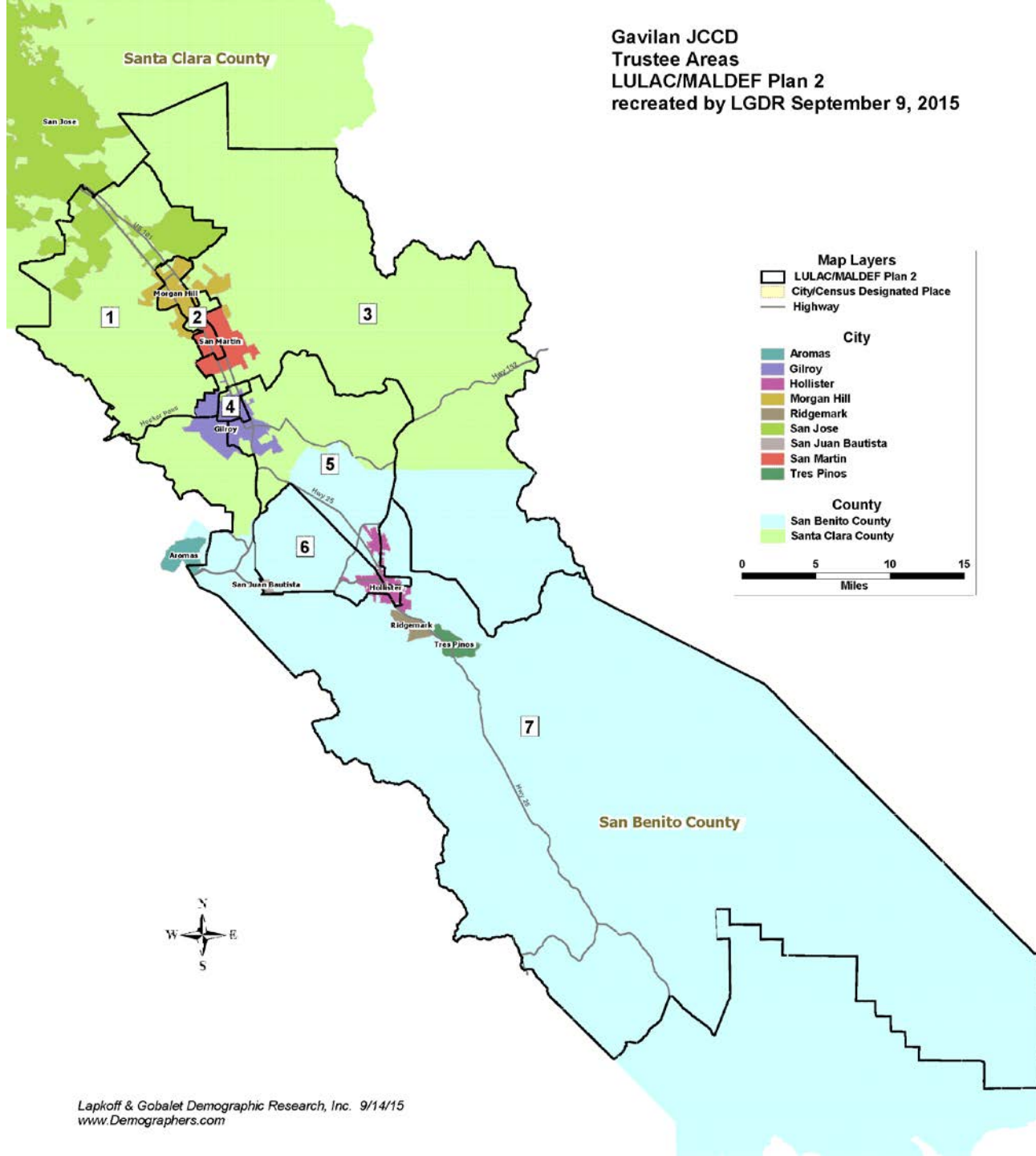
## **Characteristics:**

- 1. Very similar to LULAC/MALDEF Plan 1 (LM Plan 1) - identical boundaries for TAs 4, 5, and 6. Northern boundaries were adjusted.**
- 2. The Hispanic Citizen Voting Age Population (HCVAP) majority shares in TAs 4, 5, and 6 are 63%, 63%, and 61% (using LGDR's method of estimating CVAP). The HCVAP share in TA 2 was increased from an estimated 29% in LM Plan 1 to 31% in LM Plan 2.**
- 3. Two incumbent pairings: Brusco (2016) and Perry (2018) in TA 1, and Breen (2016) and Locci (2018) in TA 7**
- 4. San Juan Bautista's sphere of influence is split between TAs 6 and 7.**
- 5. Deviation = 8.1%.**

# LULAC/MALDEF Plan 2

## Overview (LGDR re-creation)

Gavilan JCCD  
 Trustee Areas  
 LULAC/MALDEF Plan 2  
 recreated by LGDR September 9, 2015

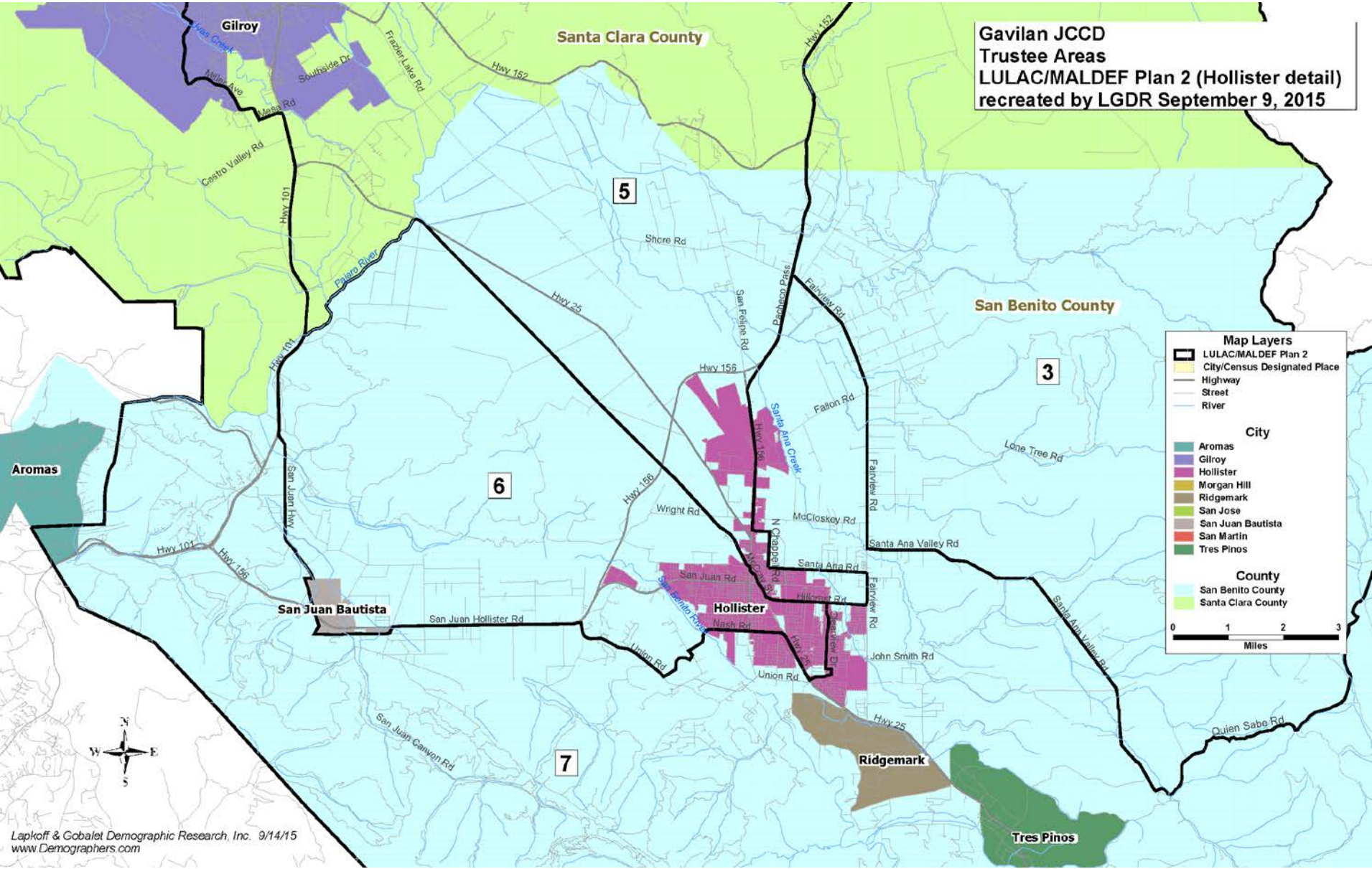








# LULAC/MALDEF Plan 2 – Hollister detail



Lapkoff & Cabalet Demographic Research, Inc. 9/14/15  
 www.Demographers.com

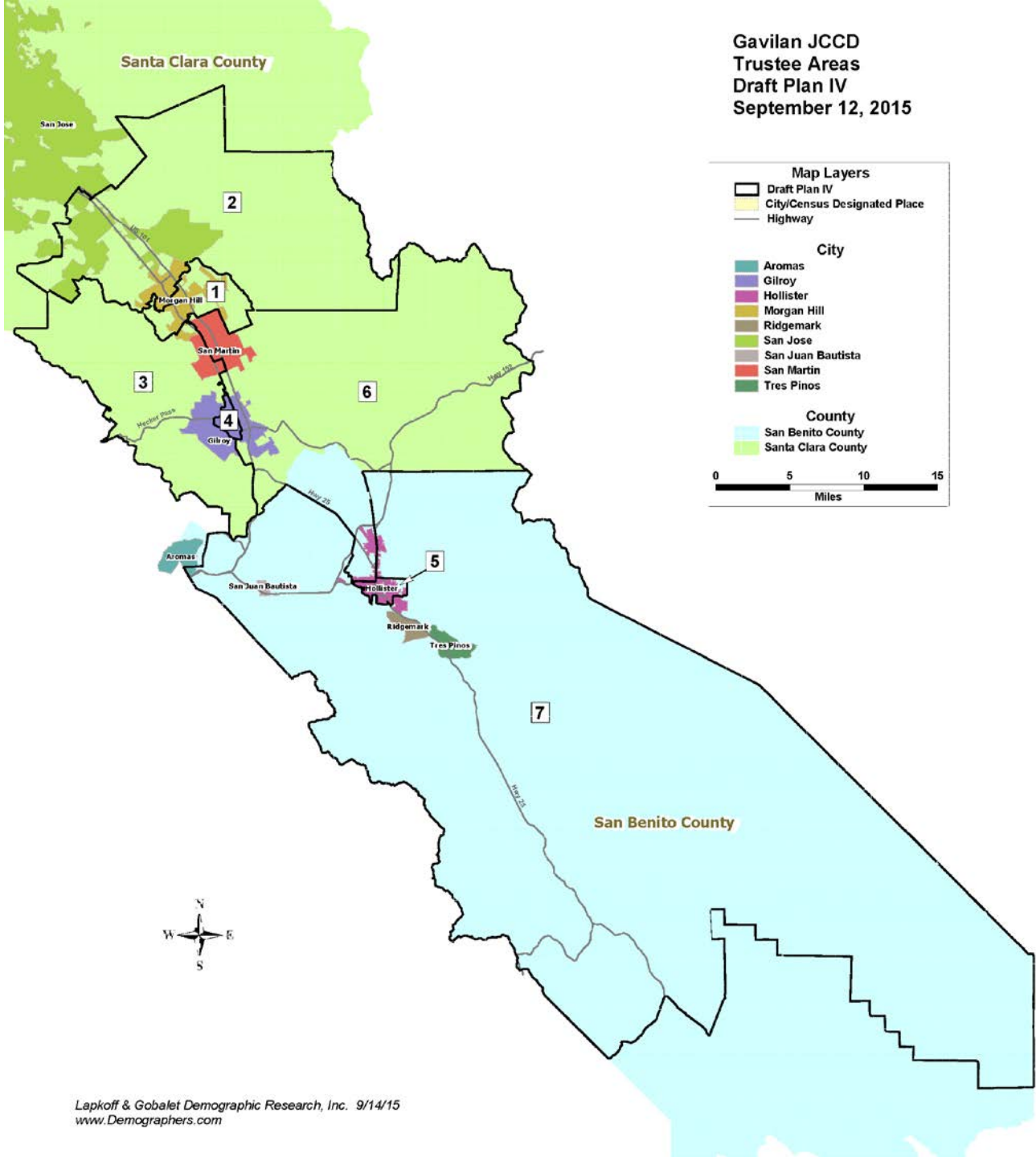


**Draft Plan IV:** Hybrid plan developed by LGDR after reviewing both LULAC/MALDEF plans and the Draft plans, considering comments made at all the meetings

### **Characteristics:**

- 1. TAs 1 and 2 resemble Draft Plan I configuration.**
- 2. TAs 5 and 7 are entirely inside San Benito County and TAs 1-4 are entirely within Santa Clara County. TA 6 includes territory in both counties.**
- 3. The San Juan Bautista community of interest is entirely in TA 7.**
- 4. TAs 4, 5, and 6 have HCVAP majorities (55%, 58%, and 56%), and TA 7 has 34%.**
- 5. TA numbering corresponds to the election cycle: in Nov. 2016, the even-numbered seats would be up for election, and the odd-numbered seats would be elected in Nov. 2018.**
- 6. One incumbent pairing: Locci (2018) and Breen (2016) in TA 7. TA 6 would have no incumbent, and is scheduled for election in 2016. Because TA 6 has a HCVAP majority (56%), Latino voters would have the opportunity to elect or to influence the election of a trustee next year.**
- 7. The plan's deviation is 6.3%, lower than any other plan so far.**

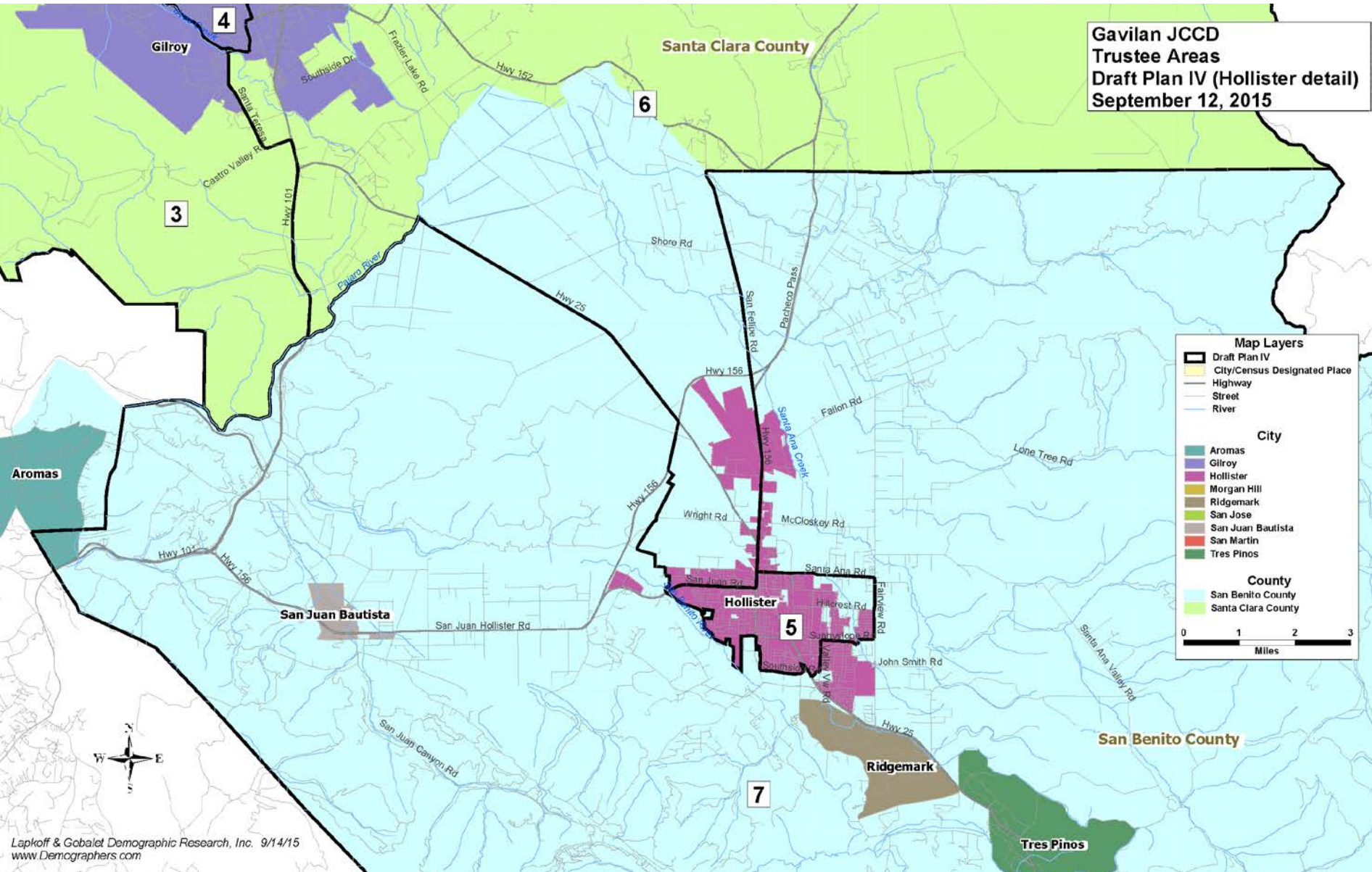
# Draft Plan IV Overview







# Draft Plan IV – Hollister detail



# Demographer's summary of plan characteristics (focus on criteria that have been discussed extensively and about which there may be concern)

Criterion	Draft Plan I	Draft Plan II	Draft Plan III	Draft Plan IV	LULAC/MALDE F Plan 1	LULAC/MALDE F Plan 2	Demographer's Comment	
<b>Required</b>								
1	Population equality: total plan deviation	7.0%	8.6%	8.6%	6.3%	7.4%	8.1%	All deviations are less than 10%
2	Voting Rights Act: Number of Hispanic-majority trustee areas (TAs) - estimated 2013 HCVAP share	2 areas; 70%, 66%	3 areas: 58%, 56%, 58%	3 areas: 58%, 56%, 58%	3 areas: 55%, 58%, 56%	3 areas: 63%, 63%, 61%	3 areas: 63%, 63%, 61%	Five plans have 3 trustee areas with HCVAP majorities. Draft Plan I concentrates Hispanics in two TAs.



**Permitted, but Required criteria are much more important:**

<b>Comunities of Interest:</b>								
4	Latinos	may be overly concentrated				LULAC members have said they like these plans		
	San Juan Bautista / Aromas-San Juan USD	intact	split between TAs 5 & 7	split between TAs 5 & 7	intact	split between TA 6 and TA 7	split between TA 6 and TA 7	only Draft Plan IV keeps this community intact (but Plans II and III could be adjusted)
	San Jose/ Coyote/ northern Morgan Hill	Morgan Hill trustees liked this			very similar to Draft Plan I			
	San Benito County	two complete TAs	no complete TAs; SB County population majorities in three	no complete TAs; SB County population majorities in three	two complete TAs	one complete TA; SB County population majority in one other	one complete TA; SB County population majority in one other	San Benito County voters could elect three trustees in Draft Plans II and III. They could elect two trustees in all other plans.
<b>Other acceptable criteria:</b>								
8	TA boundaries keep election precincts intact	Most TA boundaries follow existing precinct boundaries.	Some TA boundaries follow precinct boundaries.	Some TA boundaries follow precinct boundaries.	Some TA boundaries follow precinct boundaries.	Mr. Ochoa said the group that developed these plans did not take precinct boundaries into account. Some precincts are kept intact, but many are not.		Draft Plan I is mostly precinct-based; the other plans use some precinct boundaries.
9	Avoid head-to-head contests between incumbents (term expirations shown in parentheses)	TA 7: Breen (2016) & Locci (2018)	TA 1: Brusco (2016) & Perry (2018)	No trustee pairings	TA 7: Breen (2016) and Locci	TA 1: Brusco (2016) & Perry (2018); TA 7: Breen (2016) & Locci (2018)	TA 1: Brusco (2016) & Perry (2018); TA 7: Breen (2016) & Locci (2018)	Only Draft Plan III avoids trustee pairings.

## ***Next steps:***

- ✓ **Consider eliminating one or more plans from consideration.**
- ✓ **If additional plan revisions are requested, demographer develops scenario(s) and prepares to report to Board in November.**
- ✓ **Board holds additional meetings, if necessary.**
- ✓ **Board adopts a plan.**
- ✓ **District implements the plan (steps prescribed by law).**

# Questions?

*Jeanne Gobalet, Ph.D.*  
*Lapkoff & Gobalet*  
*Demographic Research, Inc.*  
*[www.Demographers.com](http://www.Demographers.com)*

# Plan Comparison: Detailed plan data

Gavilan Community College District				Data:				Source:					
Draft Plan I - July 14, 2015				Total and VAP (Voting Age Population)				Census 2010 PL94-171 redistricting data release					
Draft Plan II - July 14, 2015				CVAP (Citizen Voting Age Population)				American Community Survey 2006-10 ("2010") & 2009-13 ("2013")					
Draft Plan III - July 14, 2015				Registered & actual voter data				California Statewide Database					
Draft Plan IV - Sept. 12, 2015													
LULAC/MALDEF Plan 1 - 8/1/15 (reconstructed by demographer)													
LULAC/MALDEF Plan 2 - 9/8/15 (reconstructed by demographer)													
				Percent of Trustee Area that was				Other groups' shares of total 2010 population					
				Hispanic/Latino				Spanish Surname					
Trustee Area	Population	Deviation	Percent Deviation	Total pop 2010	VAP 2010	estimated CVAP 2010	estimated CVAP 2013	Registered voters Nov 2010	Voters Nov 2010	African American	Asian	non-Hispanic White	Other
<b>Draft Plan I - July 14, 2015</b>													
1	24,355	-188	-0.8%	33%	29%	24%	23%	17%	14%	2%	10%	53%	2%
2	24,056	-487	-2.0%	34%	30%	25%	24%	20%	17%	3%	17%	45%	2%
3	24,856	313	1.3%	43%	38%	32%	37%	28%	22%	2%	11%	42%	2%
4	24,714	171	0.7%	73%	68%	54%	70%	48%	40%	1%	4%	20%	1%
5	24,507	-36	-0.1%	72%	67%	57%	66%	56%	53%	1%	2%	24%	1%
6	25,513	970	4.0%	41%	36%	27%	25%	22%	15%	1%	6%	51%	2%
7	23,803	-740	-3.0%	44%	39%	32%	34%	28%	22%	1%	4%	49%	2%
Total	171,804	1,710	7.0%	49%	44%	35%	39%	29%	20%	2%	8%	41%	2%
<b>Draft Plan II - July 14, 2015</b>													
1	25,772	1,229	5.0%	36%	31%	26%	23%	19%	17%	3%	13%	46%	2%
2	23,738	-805	-3.3%	31%	28%	25%	22%	18%	14%	2%	13%	52%	2%
3	24,974	431	1.8%	40%	36%	30%	32%	24%	19%	2%	9%	46%	2%
4	23,665	-878	-3.6%	64%	58%	48%	58%	38%	30%	1%	5%	29%	1%
5	24,227	-316	-1.3%	63%	58%	48%	58%	46%	25%	1%	5%	29%	1%
6	24,682	139	0.6%	68%	63%	49%	56%	45%	48%	1%	3%	27%	2%
7	24,746	203	0.8%	39%	34%	25%	28%	25%	22%	1%	5%	54%	2%
Total	171,804	2,107	8.6%	49%	44%	35%	39%	29%	20%	2%	8%	41%	2%
<b>Draft Plan III - July 14, 2015</b>													
1	23,733	-810	-3.3%	37%	33%	27%	24%	20%	17%	3%	13%	45%	2%
2	25,777	1,234	5.0%	30%	27%	24%	21%	17%	14%	2%	14%	52%	2%
3	24,974	431	1.8%	40%	36%	30%	32%	24%	19%	2%	9%	46%	2%
4	23,665	-878	-3.6%	64%	58%	48%	58%	38%	30%	1%	5%	29%	1%
5	24,227	-316	-1.3%	63%	58%	48%	58%	46%	25%	1%	5%	29%	1%
6	24,682	139	0.6%	68%	63%	49%	56%	45%	48%	1%	3%	27%	2%
7	24,746	203	0.8%	39%	34%	25%	28%	25%	22%	1%	5%	54%	2%
Total	171,804	2,112	8.6%	49%	44%	35%	39%	29%	20%	2%	8%	41%	2%
<b>Draft Plan IV - Sept. 12, 2015</b>													
1	24,949	406	1.7%	33%	29%	25%	22%	18%	14%	2%	10%	52%	2%
2	24,303	-240	-1.0%	34%	30%	26%	24%	20%	17%	3%	17%	44%	2%
3	25,327	784	3.2%	36%	31%	26%	28%	22%	17%	2%	11%	50%	2%
4	24,203	-340	-1.4%	62%	57%	47%	55%	38%	31%	1%	5%	29%	1%
5	24,769	226	0.9%	64%	59%	49%	58%	45%	35%	1%	3%	31%	2%
6	24,475	-68	-0.3%	66%	62%	47%	56%	45%	33%	1%	4%	27%	1%
7	23,778	-765	-3.1%	44%	39%	31%	34%	28%	24%	1%	4%	50%	2%
Total	171,804	1,549	6.3%	49%	44%	35%	39%	29%	20%	2%	8%	41%	2%
<b>LULAC/MALDEF Plan 1 - 8/1/15 (reconstructed by demographer)</b>													
1	25,458	915	3.7%	29%	25%	21%	20%	18%	16%	2%	12%	55%	2%
2	25,233	690	2.8%	42%	37%	31%	29%	22%	17%	2%	11%	44%	2%
3	25,341	798	3.2%	30%	27%	23%	19%	18%	15%	2%	14%	51%	2%
4	23,639	-904	-3.7%	69%	64%	53%	63%	47%	41%	2%	6%	22%	1%
5	23,977	-566	-2.3%	66%	60%	47%	63%	41%	27%	1%	4%	28%	1%
6	24,326	-217	-0.9%	69%	64%	54%	61%	52%	48%	1%	2%	26%	2%
7	23,830	-713	-2.9%	38%	34%	25%	30%	25%	20%	1%	4%	55%	2%
Total	171,804	1,819	7.4%	49%	44%	35%	39%	29%	20%	2%	8%	41%	2%
<b>LULAC/MALDEF Plan 2 - 9/8/15 (reconstructed by demographer)</b>													
1	24,963	420	1.7%	27%	24%	20%	19%	16%	14%	3%	14%	54%	2%
2	23,915	-628	-2.6%	44%	40%	34%	31%	24%	19%	2%	11%	41%	2%
3	25,621	1,078	4.4%	30%	27%	22%	19%	19%	16%	2%	10%	56%	2%
4	23,639	-904	-3.7%	69%	64%	53%	63%	47%	41%	2%	6%	22%	1%
5	23,977	-566	-2.3%	66%	60%	47%	63%	41%	27%	1%	4%	28%	1%
6	24,326	-217	-0.9%	69%	64%	54%	61%	52%	48%	1%	2%	26%	2%
7	25,363	820	3.3%	37%	33%	25%	29%	25%	19%	1%	6%	54%	2%
Total	171,811	1,982	8.1%	49%	44%	35%	39%	29%	20%	2%	8%	41%	2%





# Plan Comparison: Registered Voters by County

Draft Plan I - Trustee Area November 2010 Registered Voters									Percentage distribution by county						
County	1	2	3	4	5	6	7	Total	1	2	3	4	5	6	7
San Benito					9,371	2,768	12,013	24,152					100%	22%	100%
Santa Clara	12,359	11,501	11,427	7,397		9,707		52,391	100%	100%	100%	100%		78%	
Total	12,359	11,501	11,427	7,397	9,371	12,475	12,013	76,543	100%	100%	100%	100%	100%	100%	100%
Draft Plan II - Trustee Area November 2010 Registered Voters									Percentage distribution by county						
County	1	2	3	4	5	6	7	Total	1	2	3	4	5	6	7
San Benito					7,425	7,131	9,596	24,152					75%	83%	74%
Santa Clara	12,505	11,832	11,963	8,692	2,468	1,509	3,422	52,391	100%	100%	100%	100%	25%	17%	26%
Total	12,505	11,832	11,963	8,692	9,893	8,640	13,018	76,543	100%	100%	100%	100%	100%	100%	100%
Draft Plan III - Trustee Area November 2010 Registered Voters									Percentage distribution by county						
County	1	2	3	4	5	6	7	Total	1	2	3	4	5	6	7
San Benito					7,425	7,131	9,596	24,152					75%	83%	74%
Santa Clara	11,481	12,856	11,963	8,692	2,468	1,509	3,422	52,391	100%	100%	100%	100%	25%	17%	26%
Total	11,481	12,856	11,963	8,692	9,893	8,640	13,018	76,543	100%	100%	100%	100%	100%	100%	100%
Draft Plan IV - Trustee Area November 2010 Registered Voters									Percentage distribution by county						
County	1	2	3	4	5	6	7	Total	1	2	3	4	5	6	7
San Benito					9,463	2,152	12,537	24,152					100%	25%	100%
Santa Clara	12,558	11,576	12,870	8,856		6,531		52,391	100%	100%	100%	100%	0%	75%	0%
Total	12,558	11,576	12,870	8,856	9,463	8,683	12,537	76,543	100%	100%	100%	100%	100%	100%	100%
LULAC/MALDEF Plan 1 - Trustee Area November 2010 Registered Voters									Percentage distribution by county						
County	1	2	3	4	5	6	7	Total	1	2	3	4	5	6	7
San Benito					2,695	9,346	12,111	24,152					31%	100%	93%
Santa Clara	14,270	10,659	13,349	7,078	6,136		899	52,391	100%	100%	100%	100%	69%		7%
Total	14,270	10,659	13,349	7,078	8,831	9,346	13,010	76,543	100%	100%	100%	100%	100%	100%	100%
LULAC/MALDEF Plan 2 - Trustee Area November 2010 Registered Voters									Percentage distribution by county						
County	1	2	3	4	5	6	7	Total	1	2	3	4	5	6	7
San Benito			1,258		2,695	9,346	10,853	24,152					31%	100%	79%
Santa Clara	13,774	9,571	12,948	7,078	6,136		2,884	52,391	100%	100%	91%	100%	69%		21%
Total	13,774	9,571	14,206	7,078	8,831	9,346	13,737	76,543	100%	100%	91%	100%	100%	100%	100%

# Plan Comparison: Total Population by City/Place

Plan I - Trustee Area Census 2010 population																	
Place	1	2	3	4	5	6	7	Total	1	2	3	4	5	6	7	Total	
Aromas					114			114								100%	
Gilroy			24,888	24,135				48,821			51%	49%				100%	
Hollister					23,481		11,487	34,928					87%		33%	100%	
Morgan Hill	21,924	13,491				2,487		37,882	58%	36%				7%		100%	
Ridgemark							3,016	3,016								100%	
San Jose		8,436						8,436		100%						100%	
San Juan Bautista							1,882	1,882								100%	
San Martin						7,027		7,027						100%		100%	
Tres Pinos							478	478								100%	
other unincorporated	2,431	2,129	170	579	1,048	16,019	6,888	29,242	8%	7%	1%	2%	4%	55%	23%	100%	
<b>Total</b>	<b>24,385</b>	<b>24,056</b>	<b>24,858</b>	<b>24,714</b>	<b>24,807</b>	<b>26,513</b>	<b>23,803</b>	<b>171,804</b>									
Plan II - Trustee Area Census 2010 population																	
Place	1	2	3	4	5	6	7	Total	1	2	3	4	5	6	7	Total	
Aromas					114			114					100%			100%	
Gilroy			14,069	23,227	4,372	6,481	672	48,821			29%	48%	9%	13%	1%	100%	
Hollister					15,583	13,048	6,297	34,928					45%	37%	18%	100%	
Morgan Hill	13,729	19,045	5,108					37,882	36%	50%	13%					100%	
Ridgemark							3,016	3,016								100%	
San Jose	8,323	113						8,436	99%	1%						100%	
San Juan Bautista					1,628		234	1,862					87%		13%	100%	
San Martin		1,456	2,988				2,583	7,027		21%	43%					100%	
Tres Pinos							478	478								100%	
other unincorporated	3,720	3,124	2,809	438	3,140	5,153	10,858	29,242	13%	11%	10%	1%	11%	18%	37%	100%	
<b>Total</b>	<b>25,772</b>	<b>23,738</b>	<b>24,974</b>	<b>23,665</b>	<b>24,837</b>	<b>24,682</b>	<b>24,136</b>	<b>171,804</b>									
Plan III - Trustee Area Census 2010 population																	
Place	1	2	3	4	5	6	7	Total	1	2	3	4	5	6	7	Total	
Aromas					114			114					100%			100%	
Gilroy			14,069	23,227	4,372	6,481	672	48,821			29%	48%	9%	13%	1%	100%	
Hollister					14,988	13,048	6,894	34,928					43%	37%	20%	100%	
Morgan Hill	11,078	21,698	5,108					37,882	29%	57%	13%					100%	
Ridgemark							3,016	3,016								100%	
San Jose	8,438							8,436	100%							100%	
San Juan Bautista					1,628		234	1,862					87%		13%	100%	
San Martin		1,456	2,988				2,583	7,027		21%	43%					100%	
Tres Pinos							478	478								100%	
other unincorporated	4,221	2,623	2,809	438	3,127	5,153	10,871	29,242	14%	9%	10%	1%	11%	18%	37%	100%	
<b>Total</b>	<b>23,733</b>	<b>25,777</b>	<b>24,974</b>	<b>23,665</b>	<b>24,227</b>	<b>24,682</b>	<b>24,748</b>	<b>171,804</b>									
Plan IV - Trustee Area Census 2010 population																	
Place	1	2	3	4	5	6	7	Total	1	2	3	4	5	6	7	Total	
Aromas					114			114								100%	
Gilroy			16,445	24,203		8,173		48,821			34%	50%			17%	100%	
Hollister					23,348	4,271	7,309	34,928					67%	12%	21%	100%	
Morgan Hill	21,672	13,748	2,484					37,882	57%	36%	7%					100%	
Ridgemark							3,016	3,016								100%	
San Jose		8,438						8,436		100%						100%	
San Juan Bautista							1,882	1,882								100%	
San Martin			1,579			5,448		7,027			22%			78%		100%	
Tres Pinos							478	478								100%	
other unincorporated	3,277	2,121	4,839		1,421	6,583	11,001	29,242	11%	7%	17%		5%	23%	38%	100%	
<b>Total</b>	<b>24,949</b>	<b>24,303</b>	<b>25,327</b>	<b>24,203</b>	<b>24,769</b>	<b>24,475</b>	<b>23,778</b>	<b>171,804</b>									
LULAC/MALDEF Plan 1 - Trustee Area Census 2010 population																	
Place	1	2	3	4	5	6	7	Total	1	2	3	4	5	6	7	Total	
Aromas					114			114								100%	
Gilroy	12,033			3	22,989	13,818		48,821	25%				47%	28%		100%	
Hollister					5,401	20,234	9,293	34,928					15%	58%	27%	100%	
Morgan Hill	8,007	22,151	7,724					37,882	21%	58%	20%					100%	
Ridgemark							3,016	3,016								100%	
San Jose	64		8,372					8,436	1%		99%					100%	
San Juan Bautista						1,882		1,882								100%	
San Martin	124	2,391	4,512					7,027	2%	34%	64%					100%	
Tres Pinos							478	478								100%	
other unincorporated	5,227	691	4,733	670	4,760	2,230	10,931	29,242	18%	2%	16%	2%	16%	8%	37%	100%	
<b>Total</b>	<b>25,455</b>	<b>25,233</b>	<b>25,344</b>	<b>23,639</b>	<b>23,977</b>	<b>24,326</b>	<b>23,830</b>	<b>171,804</b>									
LULAC/MALDEF Plan 2 - Trustee Area Census 2010 population																	
Place	1	2	3	4	5	6	7	Total	1	2	3	4	5	6	7	Total	
Aromas					114			114								100%	
Gilroy			7,347	22,989	13,818			48,821			15%	47%	28%			100%	
Hollister					5,401	20,234	9,293	34,928					15%	58%	27%	100%	
Morgan Hill	10,085	20,073	7,724					37,882	27%	53%	20%					100%	
Ridgemark							3,016	3,016								100%	
San Jose	8,438							8,436	100%							100%	
San Juan Bautista						1,882		1,882								100%	
San Martin		2,391	4,638					7,027		34%	66%					100%	
Tres Pinos							478	478								100%	
other unincorporated	6,442	1,451	5,914	670	4,760	2,230	7,775	29,242	22%	5%	20%	2%	16%	8%	27%	100%	
<b>Total</b>	<b>24,963</b>	<b>23,915</b>	<b>25,621</b>	<b>23,639</b>	<b>23,977</b>	<b>24,326</b>	<b>25,363</b>	<b>171,804</b>									

# Plan Comparison: Total Population by Feeder District

Plan I - Trustee Area Census 2010 population								
Feeder district	1	2	3	4	5	6	7	Total
Morgan Hill Unified	24,355	24,056				11,500		59,911
Gilroy Unified			24,856	24,714		8,309		57,879
Aromas-San Juan Unified					11		4,450	4,461
San Benito High					24,496	5,529	19,353	49,378
School district not defined						175		175
<b>Total</b>	<b>24,355</b>	<b>24,056</b>	<b>24,856</b>	<b>24,714</b>	<b>24,507</b>	<b>25,513</b>	<b>23,803</b>	<b>171,804</b>
Plan II - Trustee Area Census 2010 population								
Feeder district	1	2	3	4	5	6	7	Total
Morgan Hill Unified	25,772	23,738	8,985				1,416	59,911
Gilroy Unified			15,989	23,665	4,824	7,654	5,747	57,879
Aromas-San Juan Unified					3,103		1,358	4,461
San Benito High					16,910	17,028	15,440	49,378
School district not defined							175	175
<b>Total</b>	<b>25,772</b>	<b>23,738</b>	<b>24,974</b>	<b>23,665</b>	<b>24,837</b>	<b>24,682</b>	<b>24,136</b>	<b>171,804</b>
Plan III - Trustee Area Census 2010 population								
Feeder district	1	2	3	4	5	6	7	Total
Morgan Hill Unified	23,733	25,777	8,985				1,416	59,911
Gilroy Unified			15,989	23,665	4,824	7,654	5,747	57,879
Aromas-San Juan Unified					3,103		1,358	4,461
San Benito High					16,300	17,028	16,050	49,378
School district not defined							175	175
<b>Total</b>	<b>23,733</b>	<b>25,777</b>	<b>24,974</b>	<b>23,665</b>	<b>24,227</b>	<b>24,682</b>	<b>24,746</b>	<b>171,804</b>
Plan IV - Trustee Area Census 2010 population								
Feeder district	1	2	3	4	5	6	7	Total
Morgan Hill Unified	24,949	24,303	5,978			4,681		59,911
Gilroy Unified			19,349	24,203		14,327		57,879
Aromas-San Juan Unified							4,461	4,461
San Benito High					24,769	5,292	19,317	49,378
School district not defined						175		175
<b>Total</b>	<b>24,949</b>	<b>24,303</b>	<b>25,327</b>	<b>24,203</b>	<b>24,769</b>	<b>24,475</b>	<b>23,778</b>	<b>171,804</b>
LULAC/MALDEF Plan 1 - Trustee Area Census 2010 population								
Feeder district	1	2	3	4	5	6	7	Total
Morgan Hill Unified	11,681	25,233	22,676				321	59,911
Gilroy Unified	13,774		2,668	23,639	16,732		1,066	57,879
Aromas-San Juan Unified						2,462	1,999	4,461
San Benito High					7,215	21,864	20,299	49,378
School district not defined					30		145	175
<b>Total</b>	<b>25,455</b>	<b>25,233</b>	<b>25,344</b>	<b>23,639</b>	<b>23,977</b>	<b>24,326</b>	<b>23,830</b>	<b>171,804</b>
LULAC/MALDEF Plan 2 - Trustee Area Census 2010 population								
Feeder district	1	2	3	4	5	6	7	Total
Morgan Hill Unified	23,312	23,915	12,684					59,911
Gilroy Unified	1,651		10,842	23,639	16,732		5,015	57,879
Aromas-San Juan Unified					-	2,462	1,999	4,461
San Benito High			1,950		7,215	21,864	18,349	49,378
School district not defined			145		30			175
<b>Total</b>	<b>24,963</b>	<b>23,915</b>	<b>25,621</b>	<b>23,639</b>	<b>23,977</b>	<b>24,326</b>	<b>25,363</b>	<b>171,804</b>

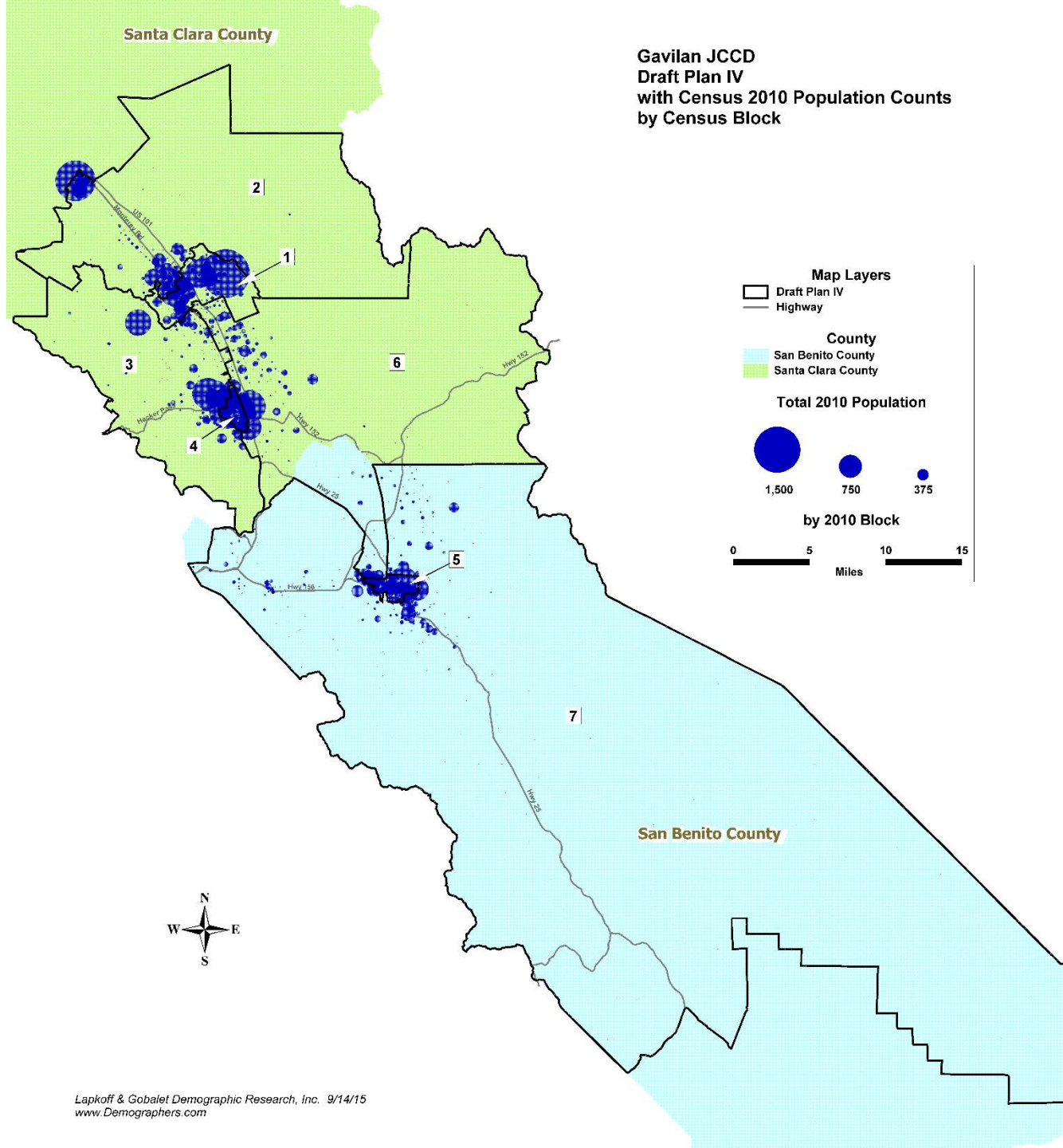
1	2	3	4	5	6	7	Total
41%	40%				19%		100%
		43%	43%		14%		100%
						100%	100%
				50%	11%	39%	100%
					100%		100%
1	2	3	4	5	6	7	Total
43%	40%	15%				2%	100%
		28%	41%	8%	13%	10%	100%
				70%		30%	100%
				34%	34%	31%	100%
						100%	100%
1	2	3	4	5	6	7	Total
40%	43%	15%				2%	100%
		28%	41%	8%	13%	10%	100%
				70%		30%	100%
				33%	34%	33%	100%
						100%	100%
1	2	3	4	5	6	7	Total
42%	41%	10%			8%		100%
		33%	42%		25%		100%
						100%	100%
				50%	11%	39%	100%
					100%		100%
1	2	3	4	5	6	7	Total
19%	42%	38%				1%	100%
24%		5%	41%	29%		2%	100%
					55%	45%	100%
				15%	44%	41%	100%
				17%		83%	100%
1	2	3	4	5	6	7	Total
39%	40%	21%					100%
3%		19%	41%	29%		9%	100%
					55%	45%	100%
		4%		15%	44%	37%	100%
		83%		17%			100%

# Plan Comparison: Trustee assignments in each plan

Draft Plans I, II, III, IV and LULAC/MALDEF Plans 1, 2 incumbents and trustee area assignments							
10/13/2015							
		Trustee Area Assignment					
Incumbent	next election	Draft Plan I	Draft Plan II	Draft Plan III	Draft Plan IV	LULAC/MALDEF Plan 1	LULAC/MALDEF Plan 2
Perry	2018	1	1	1	1	1	1
Brusco	2016	2	no TA2 incumbent; Brusco (term ends 2016) paired with Perry (term ends 2018) in TA1	2	2	no TA2 incumbent; Brusco (term ends 2016) paired with Perry (term ends 2018) in TA1	no TA2 incumbent; Brusco (term ends 2016) paired with Perry (term ends 2018) in TA1
Glines	2018	3	3	3	3	4	4
Dover	2016	4	4	4	4	5	5
Child	2018	5	5	5	5	6	6
Breen	2016	no TA6 incumbent; Breen (term ends 2016) paired with Locci (term ends 2018) in TA7	6	6	6	no TA6 incumbent; Breen (term ends 2016) paired with Locci (term ends 2018) in TA7	no TA6 incumbent; Breen (term ends 2016) paired with Locci (term ends 2018) in TA7
Locci	2018	7	7	7	7	7	7

# Census 2010 population distribution (overview)

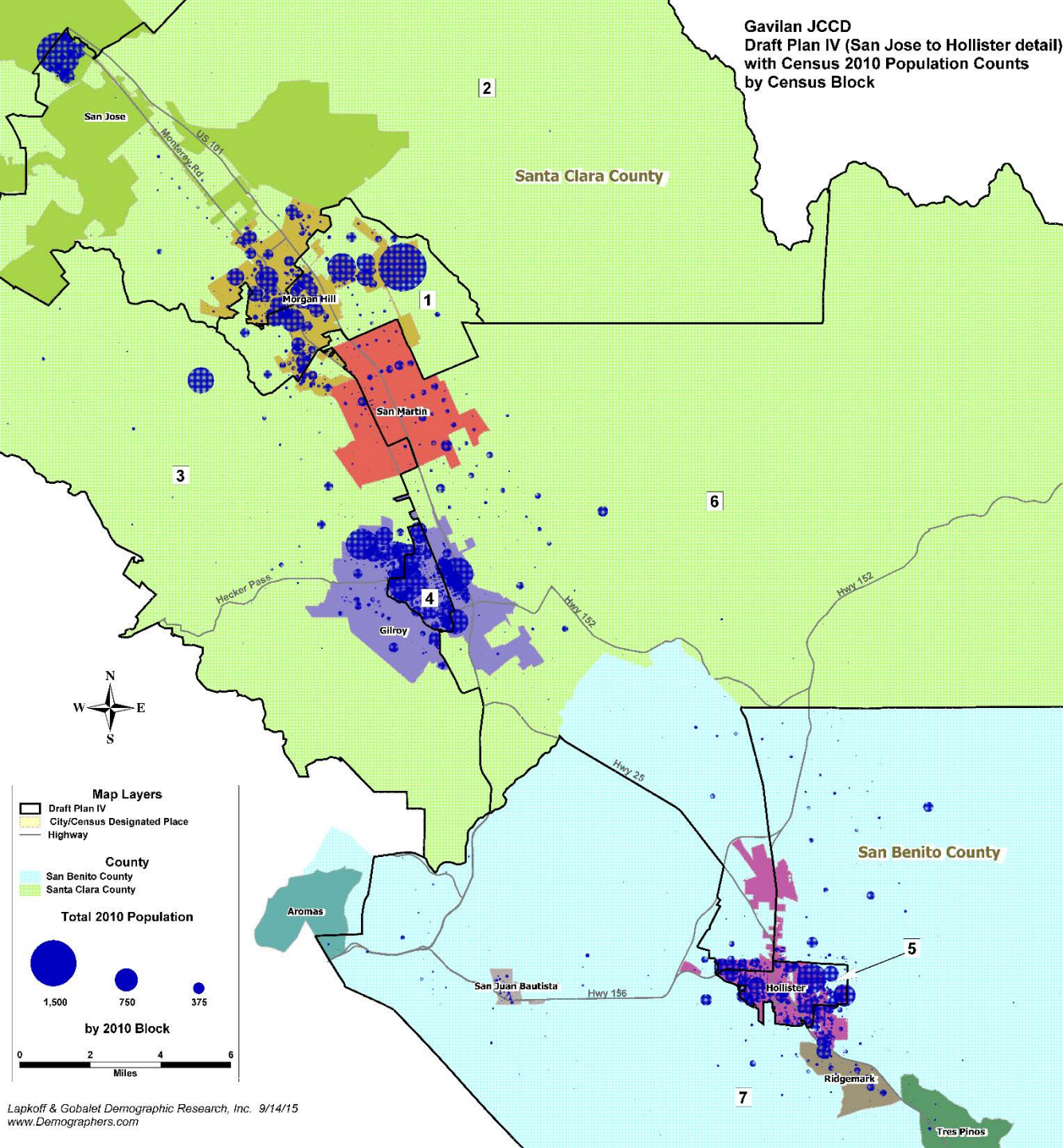
Gavilan JCCD  
 Draft Plan IV  
 with Census 2010 Population Counts  
 by Census Block





# Census 2010 population distribution (detail)

Gavilan JCCD  
 Draft Plan IV (San Jose to Hollister detail)  
 with Census 2010 Population Counts  
 by Census Block



**Map Layers**

- Draft Plan IV
- City/Census Designated Place
- Highway

**County**

- San Benito County
- Santa Clara County

**Total 2010 Population**

- 1,500
- 750
- 375

**by 2010 Block**

0 2 4 6  
Miles



# ***Morgan Hill Unified SD Trustee Area Plan adopted 9/15/15***

