

Demographer's Report on Districting Plans Gavilan Joint Community College District

September 22, 2015

The process of drawing single-member election districts for Gavilan has included opportunities for members of the public and the Board to offer opinions about which districting criteria are important. Residents of the northern, central, and southern portions of the District have commented on the various draft plans, including Draft Plans I, II, and III, as well as the first map prepared by LULAC/MALDEF.

Everyone who spoke at the public meetings in Hollister, Gilroy, and Morgan Hill and at the September 8 Board meeting praised the Board's decision to shift from at-large to by-district election of trustees. Speakers supported the creation of three Trustee Areas with Hispanic Citizen Voting Age Population (Hispanic CVAP; potential voter) majorities. Communities of interest were mentioned frequently, although it is recognized that the District's largest population concentrations (the cities of Morgan Hill, Gilroy, and Hollister) must be divided.

In response to suggestions and questions by Board members at the September 8 meeting, I performed additional analyses of the five draft plans, including the new one submitted by Mr. Steven A. Ochoa, the Mexican American Legal Defense and Educational Fund (MALDEF) National Redistricting Coordinator, immediately before the meeting. I took into account the features of all five of the plans, including both LULAC/MALDEF plans. I considered how to balance the characteristics of various plans that community members and the Board have said were desirable. In particular, I was inspired by comments made during the public meetings by supporters of the LULAC/MALDEF plans, especially the desire that particular communities of interest be recognized. I focused on trustees' questions about whether a plan could be drawn that has northern Trustee Area (TA) boundaries that resemble those in Draft Plan I, has two TAs entirely within San Benito County, and respects the San Juan Bautista community of interest.

Specifically, since the September 8 Board meeting, I have:

- Re-created the new LULAC/MALDEF Plan 2 that Mr. Ochoa submitted on September 8.
- Created a draft plan that has northern Trustee Areas resembling those in Draft Plan I, two Trustee Areas entirely within San Benito County, and three Hispanic CVAP-majority TAs plus another with a sizeable Hispanic CVAP share (Draft Plan IV).
- Compared the two new plans with Draft Plans I, II, and III as well as the original LULAC/MALDEF Plan (LM Plan 1).
- Created population distribution maps for the District.

This report details the results of my follow-up analyses.

LULAC/MALDEF Plan 2 (LM Plan 2)

This plan is very similar to the first LULAC/MALDEF Plan (LM Plan 1), with identical boundaries for TAs 4, 5, and 6. The northern TA boundaries were adjusted. Maps and data for this plan are provided later in this report. The plan has the following features:

1. The Hispanic Citizen Voting Age Population (CVAP) majority shares in TAs 4, 5, and 6 are 63%, 63%, and 61% (using my method of estimating CVAP).
2. The Hispanic CVAP share in TA 2 was increased from an estimated 29% in LM Plan 1 to 31% in LM Plan 2.
3. There are two incumbent pairings: Brusco (2016) and Perry (2018) in TA 1, and Breen (2016) and Locci (2018) in TA 7.
4. San Juan Bautista's sphere of influence (the Aromas-San Juan Unified School District) is split between TAs 6 and 7.
5. The plan's deviation is 8.1%.

Draft Plan IV

In response to suggestions made by Board members on September 8, I drafted a plan that combines desired features of the other plans (Draft Plans I, II, and III and LULAC/MALDEF Plan 1). This new plan, Draft Plan IV, has the following features:

1. The boundaries of the northernmost TAs (1 and 2) resemble those in Draft Plan I, which some Board members suggested would best respect the San Jose, Morgan Hill, and Coyote area communities of interest.
2. Two TAs, 5 and 7, are entirely inside San Benito County. TAs 1-4 are entirely within Santa Clara County. TA 6 includes territory in both counties.
3. All of the San Juan Bautista community of interest (the Aromas-San Juan Unified School District) is in TA 7.
4. Three TAs (4, 5, and 6) have Hispanic CVAP majorities (55%, 58%, and 56%).
5. TA 7 has a Hispanic CVAP share of 34%.
6. The TA numbering corresponds to the election cycle: in Nov. 2016, the even-numbered seats would be up for election, and the odd-numbered seats would be elected in Nov. 2018.
7. This plan has one incumbent pairing: Locci (2018) and Breen (2016) in TA 7. The TA 6 seat would have no incumbent, and is scheduled for election in 2016. Because TA 6 has a Hispanic CVAP majority (56%), Latino voters would have the opportunity to elect or to influence the election of a trustee of choice next year.
8. The plan's deviation is 6.3%, lower than that of any other plan created so far.

For illustrative purposes, I have created population distribution maps for this plan. They show that most of the District's population is concentrated in and near Morgan Hill, Gilroy, and Hollister, and that the eastern, western and southern areas are lightly populated.

Details of these plans are provided in the tables and maps that follow. Comparisons of all the plans are included in the data tables.

Possible Next Steps:

At the October Board meeting, I will explain this report, and the Board may at that time wish to provide guidance regarding whether any of the plans should be modified or eliminated from consideration.

I suggest that this report be posted on the District's website well in advance of the October 13 Board meeting to give community members the opportunity to review it.

Jeanne Gobalet, PhD, Demographer

Table I: Plan Comparison – Demographic Data

Gavilan Community College District				Data:				Source:					
Draft Plan I - July 14, 2015				Total and VAP (Voting Age Population)				Census 2010 PL94-171 redistricting data release					
Draft Plan II - July 14, 2015				CVAP (Citizen Voting Age Population)				American Community Survey 2006-10 ("2010") & 2009-13 ("2013")					
Draft Plan III - July 14, 2015				Registered & actual voter data				California Statewide Database					
Draft Plan IV - Sept. 12, 2015													
LULAC/MALDEF Plan 1 - 8/1/15 (reconstructed by demographer)													
LULAC/MALDEF Plan 2 - 9/8/15 (reconstructed by demographer)													
Percent of Trustee Area that was													
Trustee Area	Population	Deviation	Percent Deviation	Hispanic/Latino				Spanish Surname		Other groups' shares of total 2010 population			
				Total pop 2010	VAP 2010	estimated CVAP 2010	estimated CVAP 2013	Registered voters Nov 2010	Voters Nov 2010	African American	Asian	non-Hispanic White	Other
Draft Plan I - July 14, 2015													
1	24,355	-188	-0.8%	33%	29%	24%	23%	17%	14%	2%	10%	53%	2%
2	24,056	-487	-2.0%	34%	30%	25%	24%	20%	17%	3%	17%	45%	2%
3	24,856	313	1.3%	43%	38%	32%	37%	28%	22%	2%	11%	42%	2%
4	24,714	171	0.7%	73%	68%	54%	70%	48%	40%	1%	4%	20%	1%
5	24,507	-36	-0.1%	72%	67%	57%	66%	56%	53%	1%	2%	24%	1%
6	25,513	970	4.0%	41%	36%	27%	25%	22%	15%	1%	6%	51%	2%
7	23,803	-740	-3.0%	44%	39%	32%	34%	28%	22%	1%	4%	49%	2%
Total	171,804	1,710	7.0%	49%	44%	35%	39%	29%	20%	2%	8%	41%	2%
Draft Plan II - July 14, 2015													
1	25,772	1,229	5.0%	36%	31%	26%	23%	19%	17%	3%	13%	46%	2%
2	23,738	-805	-3.3%	31%	28%	25%	22%	18%	14%	2%	13%	52%	2%
3	24,974	431	1.8%	40%	36%	30%	32%	24%	19%	2%	9%	46%	2%
4	23,665	-878	-3.6%	64%	58%	48%	58%	38%	30%	1%	5%	29%	1%
5	24,227	-316	-1.3%	63%	58%	48%	58%	46%	25%	1%	5%	29%	1%
6	24,682	139	0.6%	68%	63%	49%	56%	45%	48%	1%	3%	27%	2%
7	24,746	203	0.8%	39%	34%	25%	28%	25%	22%	1%	5%	54%	2%
Total	171,804	2,107	8.6%	49%	44%	35%	39%	29%	20%	2%	8%	41%	2%
Draft Plan III - July 14, 2015													
1	23,733	-810	-3.3%	37%	33%	27%	24%	20%	17%	3%	13%	45%	2%
2	25,777	1,234	5.0%	30%	27%	24%	21%	17%	14%	2%	14%	52%	2%
3	24,974	431	1.8%	40%	36%	30%	32%	24%	19%	2%	9%	46%	2%
4	23,665	-878	-3.6%	64%	58%	48%	58%	38%	30%	1%	5%	29%	1%
5	24,227	-316	-1.3%	63%	58%	48%	58%	46%	25%	1%	5%	29%	1%
6	24,682	139	0.6%	68%	63%	49%	56%	45%	48%	1%	3%	27%	2%
7	24,746	203	0.8%	39%	34%	25%	28%	25%	22%	1%	5%	54%	2%
Total	171,804	2,112	8.6%	49%	44%	35%	39%	29%	20%	2%	8%	41%	2%
Draft Plan IV - Sept. 12, 2015													
1	24,949	406	1.7%	33%	29%	25%	22%	18%	14%	2%	10%	52%	2%
2	24,303	-240	-1.0%	34%	30%	26%	24%	20%	17%	3%	17%	44%	2%
3	25,327	784	3.2%	36%	31%	26%	28%	22%	17%	2%	11%	50%	2%
4	24,203	-340	-1.4%	62%	57%	47%	55%	38%	31%	1%	5%	29%	1%
5	24,769	226	0.9%	64%	59%	49%	58%	45%	35%	1%	3%	31%	2%
6	24,475	-68	-0.3%	66%	62%	47%	56%	45%	33%	1%	4%	27%	1%
7	23,778	-765	-3.1%	44%	39%	31%	34%	28%	24%	1%	4%	50%	2%
Total	171,804	1,549	6.3%	49%	44%	35%	39%	29%	20%	2%	8%	41%	2%
LULAC/MALDEF Plan 1 - 8/1/15 (reconstructed by demographer)													
1	25,458	915	3.7%	29%	25%	21%	20%	18%	16%	2%	12%	55%	2%
2	25,233	690	2.8%	42%	37%	31%	29%	22%	17%	2%	11%	44%	2%
3	25,341	798	3.2%	30%	27%	23%	19%	18%	15%	2%	14%	51%	2%
4	23,639	-904	-3.7%	69%	64%	53%	63%	47%	41%	2%	6%	22%	1%
5	23,977	-566	-2.3%	66%	60%	47%	63%	41%	27%	1%	4%	28%	1%
6	24,326	-217	-0.9%	69%	64%	54%	61%	52%	48%	1%	2%	26%	2%
7	23,830	-713	-2.9%	38%	34%	25%	30%	25%	20%	1%	4%	55%	2%
Total	171,804	1,819	7.4%	49%	44%	35%	39%	29%	20%	2%	8%	41%	2%
LULAC/MALDEF Plan 2 - 9/8/15 (reconstructed by demographer)													
1	24,963	420	1.7%	27%	24%	20%	19%	16%	14%	3%	14%	54%	2%
2	23,915	-628	-2.6%	44%	40%	34%	31%	24%	19%	2%	11%	41%	2%
3	25,621	1,078	4.4%	30%	27%	22%	19%	19%	16%	2%	10%	56%	2%
4	23,639	-904	-3.7%	69%	64%	53%	63%	47%	41%	2%	6%	22%	1%
5	23,977	-566	-2.3%	66%	60%	47%	63%	41%	27%	1%	4%	28%	1%
6	24,326	-217	-0.9%	69%	64%	54%	61%	52%	48%	1%	2%	26%	2%
7	25,363	820	3.3%	37%	33%	25%	29%	25%	19%	1%	6%	54%	2%
Total	171,811	1,982	8.1%	49%	44%	35%	39%	29%	20%	2%	8%	41%	2%

Table 2: Plan Comparison - Total Population by County

Plan I - Trustee Area Census 2010 population															
County	1	2	3	4	5	6	7	Total	1	2	3	4	5	6	7
San Benito					24,507	5,529	23,803	53,839					100%	22%	100%
Santa Clara	24,355	24,056	24,856	24,714		19,984		117,965	100%	100%	100%	100%		78%	
Total	24,355	24,056	24,856	24,714	24,507	25,513	23,803	171,804	100%	100%	100%	100%	100%	100%	100%
Plan II - Trustee Area Census 2010 population															
County	1	2	3	4	5	6	7	Total	1	2	3	4	5	6	7
San Benito					20,013	17,028	16,798	53,839					81%	69%	70%
Santa Clara	25,772	23,738	24,974	23,665	4,824	7,654	7,338	117,965	100%	100%	100%	100%	19%	31%	30%
Total	25,772	23,738	24,974	23,665	24,837	24,682	24,136	171,804	100%	100%	100%	100%	100%	100%	100%
Plan III - Trustee Area Census 2010 population															
County	1	2	3	4	5	6	7	Total	1	2	3	4	5	6	7
San Benito					19,403	17,028	17,408	53,839					80%	69%	70%
Santa Clara	23,733	25,777	24,974	23,665	4,824	7,654	7,338	117,965	100%	100%	100%	100%	20%	31%	30%
Total	23,733	25,777	24,974	23,665	24,227	24,682	24,746	171,804	100%	100%	100%	100%	100%	100%	100%
Plan IV - Trustee Area Census 2010 population															
County	1	2	3	4	5	6	7	Total	1	2	3	4	5	6	7
San Benito					24,769	5,292	23,778	53,839					100%	22%	100%
Santa Clara	24,949	24,303	25,327	24,203		19,183		117,965	100%	100%	100%	100%		78%	
Total	24,949	24,303	25,327	24,203	24,769	24,475	23,778	171,804	100%	100%	100%	100%	100%	100%	100%
LULAC/MALDEF Plan 1 - Trustee Area Census 2010 population															
County	1	2	3	4	5	6	7	Total	1	2	3	4	5	6	7
San Benito					7,215	24,326	22,298	53,839					30%	100%	94%
Santa Clara	25,455	25,233	25,344	23,639	16,762		1,532	117,965	100%	100%	100%	100%	70%		6%
Total	25,455	25,233	25,344	23,639	23,977	24,326	23,830	171,804	100%	100%	100%	100%	100%	100%	100%
LULAC/MALDEF Plan 2 - Trustee Area Census 2010 population															
County	1	2	3	4	5	6	7	Total	1	2	3	4	5	6	7
San Benito			1,950		7,215	24,326	20,348	53,839			8%		30%	100%	80%
Santa Clara	24,963	23,915	23,671	23,639	16,762		5,015	117,965	100%	100%	92%	100%	70%		20%
Total	24,963	23,915	25,621	23,639	23,977	24,326	25,363	171,804	100%	100%	100%	100%	100%	100%	100%

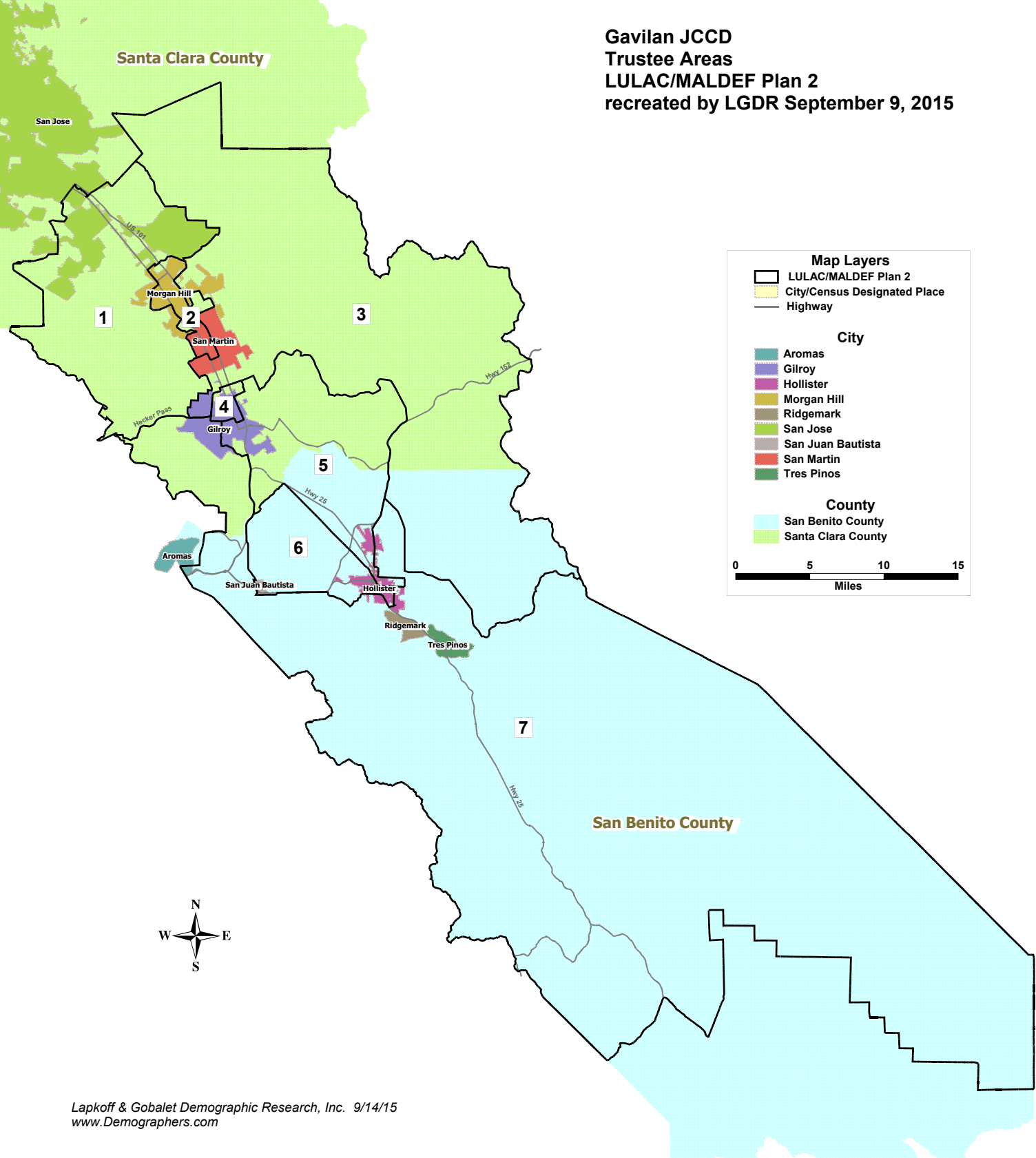
Table 3: Plan Comparison - Total Population by School District

		Plan I - Trustee Area Census 2010 population														
Feeder district	1	2	3	4	5	6	7	Total	1	2	3	4	5	6	7	Total
Morgan Hill Unified	24,355	24,056				11,500		59,911	41%	40%				19%		100%
Gilroy Unified			24,856	24,714		8,309		57,879			43%	43%		14%		100%
Aromas-San Juan Unified					11		4,450	4,461							100%	100%
San Benito High					24,496	5,529	19,353	49,378					50%	11%	39%	100%
School district not defined						175		175						100%		100%
Total	24,355	24,056	24,856	24,714	24,507	25,513	23,803	171,804								
		Plan II - Trustee Area Census 2010 population														
Feeder district	1	2	3	4	5	6	7	Total	1	2	3	4	5	6	7	Total
Morgan Hill Unified	25,772	23,738	8,985				1,416	59,911	43%	40%	15%				2%	100%
Gilroy Unified			15,989	23,665	4,824	7,654	5,747	57,879			28%	41%	8%	13%	10%	100%
Aromas-San Juan Unified					3,103		1,358	4,461					70%		30%	100%
San Benito High					16,910	17,028	15,440	49,378					34%	34%	31%	100%
School district not defined							175	175							100%	100%
Total	25,772	23,738	24,974	23,665	24,837	24,682	24,136	171,804								
		Plan III - Trustee Area Census 2010 population														
Feeder district	1	2	3	4	5	6	7	Total	1	2	3	4	5	6	7	Total
Morgan Hill Unified	23,733	25,777	8,985				1,416	59,911	40%	43%	15%				2%	100%
Gilroy Unified			15,989	23,665	4,824	7,654	5,747	57,879			28%	41%	8%	13%	10%	100%
Aromas-San Juan Unified					3,103		1,358	4,461					70%		30%	100%
San Benito High					16,300	17,028	16,050	49,378					33%	34%	33%	100%
School district not defined							175	175							100%	100%
Total	23,733	25,777	24,974	23,665	24,227	24,682	24,746	171,804								
		Plan IV - Trustee Area Census 2010 population														
Feeder district	1	2	3	4	5	6	7	Total	1	2	3	4	5	6	7	Total
Morgan Hill Unified	24,949	24,303	5,978			4,681		59,911	42%	41%	10%			8%		100%
Gilroy Unified			19,349	24,203		14,327		57,879			33%	42%		25%		100%
Aromas-San Juan Unified							4,461	4,461							100%	100%
San Benito High					24,769	5,292	19,317	49,378					50%	11%	39%	100%
School district not defined							175	175						100%		100%
Total	24,949	24,303	25,327	24,203	24,769	24,475	23,778	171,804								
		LULAC/MALDEF Plan 1 - Trustee Area Census 2010 population														
Feeder district	1	2	3	4	5	6	7	Total	1	2	3	4	5	6	7	Total
Morgan Hill Unified	11,681	25,233	22,676				321	59,911	19%	42%	38%				1%	100%
Gilroy Unified	13,774		2,668	23,639	16,732		1,066	57,879	24%		5%	41%	29%		2%	100%
Aromas-San Juan Unified						2,462	1,999	4,461						55%	45%	100%
San Benito High					7,215	21,864	20,299	49,378					15%	44%	41%	100%
School district not defined					30		145	175					17%		83%	100%
Total	25,455	25,233	25,344	23,639	23,977	24,326	23,830	171,804								
		LULAC/MALDEF Plan 2 - Trustee Area Census 2010 population														
Feeder district	1	2	3	4	5	6	7	Total	1	2	3	4	5	6	7	Total
Morgan Hill Unified	23,312	23,915	12,684					59,911	39%	40%	21%					100%
Gilroy Unified	1,651		10,842	23,639	16,732		5,015	57,879	3%		19%	41%	29%		9%	100%
Aromas-San Juan Unified					-	2,462	1,999	4,461						55%	45%	100%
San Benito High			1,950		7,215	21,864	18,349	49,378			4%		15%	44%	37%	100%
School district not defined			145		30			175			83%		17%			100%
Total	24,963	23,915	25,621	23,639	23,977	24,326	25,363	171,804								

Table 3: Plan Comparison - Total Population by City and Unincorporated Place

Plan I - Trustee Area Census 2010 population																			
Place	1	2	3	4	5	6	7	Total		1	2	3	4	5	6	7	Total		
Aromas							114	114								100%	100%		
Gilroy			24,686	24,135				48,821				51%	49%				100%		
Hollister					23,461		11,467	34,928						67%		33%	100%		
Morgan Hill	21,924	13,491				2,467		37,882	58%	36%					7%		100%		
Ridgemark							3,016	3,016									100%		
San Jose		8,436						8,436		100%							100%		
San Juan Bautista							1,862	1,862									100%		
San Martin						7,027		7,027							100%		100%		
Tres Pinos								476									100%		
other unincorporated	2,431	2,129	170	579	1,046	16,019	6,868	29,242	8%	7%	1%	2%	4%	55%	23%		100%		
Total	24,355	24,056	24,856	24,714	24,507	25,513	23,803	171,804											
Plan II - Trustee Area Census 2010 population																			
Place	1	2	3	4	5	6	7	Total		1	2	3	4	5	6	7	Total		
Aromas					114			114						100%			100%		
Gilroy			14,069	23,227	4,372	6,481	672	48,821				29%	48%	9%	13%	1%	100%		
Hollister					15,583	13,048	6,297	34,928						45%	37%	18%	100%		
Morgan Hill	13,729	19,045	5,108					37,882	36%	50%	13%						100%		
Ridgemark							3,016	3,016									100%		
San Jose	8,323	113						8,436	99%	1%							100%		
San Juan Bautista					1,628		234	1,862						87%		13%	100%		
San Martin		1,456	2,988				2,583	7,027		21%	43%						100%		
Tres Pinos							476	476									100%		
other unincorporated	3,720	3,124	2,809	438	3,140	5,153	10,858	29,242	13%	11%	10%	1%	11%	18%	37%		100%		
Total	25,772	23,738	24,974	23,665	24,837	24,682	24,136	171,804											
Plan III - Trustee Area Census 2010 population																			
Place	1	2	3	4	5	6	7	Total		1	2	3	4	5	6	7	Total		
Aromas					114			114						100%			100%		
Gilroy			14,069	23,227	4,372	6,481	672	48,821				29%	48%	9%	13%	1%	100%		
Hollister					14,986	13,048	6,894	34,928						43%	37%	20%	100%		
Morgan Hill	11,076	21,698	5,108					37,882	29%	57%	13%						100%		
Ridgemark							3,016	3,016									100%		
San Jose	8,436							8,436	100%								100%		
San Juan Bautista					1,628		234	1,862						87%		13%	100%		
San Martin		1,456	2,988				2,583	7,027		21%	43%						100%		
Tres Pinos							476	476									100%		
other unincorporated	4,221	2,623	2,809	438	3,127	5,153	10,871	29,242	14%	9%	10%	1%	11%	18%	37%		100%		
Total	23,733	25,777	24,974	23,665	24,227	24,682	24,746	171,804											
Plan IV - Trustee Area Census 2010 population																			
Place	1	2	3	4	5	6	7	Total		1	2	3	4	5	6	7	Total		
Aromas					114			114									100%		
Gilroy			16,445	24,203		8,173		48,821				34%	50%		17%		100%		
Hollister					23,348	4,271	7,309	34,928						67%	12%	21%	100%		
Morgan Hill	21,672	13,746	2,464					37,882	57%	36%	7%						100%		
Ridgemark							3,016	3,016									100%		
San Jose		8,436						8,436		100%							100%		
San Juan Bautista							1,862	1,862									100%		
San Martin			1,579			5,448		7,027				22%			78%		100%		
Tres Pinos							476	476									100%		
other unincorporated	3,277	2,121	4,839		1,421	6,583	11,001	29,242	11%	7%	17%		5%	23%	38%		100%		
Total	24,949	24,303	25,327	24,203	24,769	24,475	23,778	171,804											
LULAC/MALDEF Plan 1 - Trustee Area Census 2010 population																			
Place	1	2	3	4	5	6	7	Total		1	2	3	4	5	6	7	Total		
Aromas							114	114									100%		
Gilroy	12,033		3	22,969	13,816			48,821	25%				47%	28%			100%		
Hollister					5,401	20,234	9,293	34,928						15%	58%	27%	100%		
Morgan Hill	8,007	22,151	7,724					37,882	21%	58%	20%						100%		
Ridgemark							3,016	3,016									100%		
San Jose	64		8,372					8,436	1%		99%						100%		
San Juan Bautista						1,862		1,862									100%		
San Martin	124	2,391	4,512					7,027	2%	34%	64%						100%		
Tres Pinos							476	476									100%		
other unincorporated	5,227	691	4,733	670	4,760	2,230	10,931	29,242	18%	2%	16%	2%	16%	8%	37%		100%		
Total	25,455	25,233	25,344	23,639	23,977	24,326	23,830	171,804											
LULAC/MALDEF Plan 2 - Trustee Area Census 2010 population																			
Place	1	2	3	4	5	6	7	Total		1	2	3	4	5	6	7	Total		
Aromas							114	114									100%		
Gilroy			7,347	22,969	13,816		4,689	48,821				15%	47%	28%		10%	100%		
Hollister					5,401	20,234	9,293	34,928						15%	58%	27%	100%		
Morgan Hill	10,085	20,073	7,724					37,882	27%	53%	20%						100%		
Ridgemark							3,016	3,016									100%		
San Jose	8,436							8,436	100%								100%		
San Juan Bautista						1,862		1,862									100%		
San Martin		2,391	4,636					7,027			34%	66%					100%		
Tres Pinos							476	476									100%		
other unincorporated	6,442	1,451	5,914	670	4,760	2,230	7,775	29,242	22%	5%	20%	2%	16%	8%	27%		100%		
Total	24,963	23,915	25,621	23,639	23,977	24,326	25,363	171,804											

Gavilan JCCD
 Trustee Areas
 LULAC/MALDEF Plan 2
 recreated by LGDR September 9, 2015



**Gavilan JCCD
Trustee Areas
LULAC/MALDEF Plan 2 (north detail)
recreated by LGDR September 9, 2015**



Map Layers

- LULAC/MALDEF Plan 2
- City/Census Designated Place
- Highway
- Street
- River

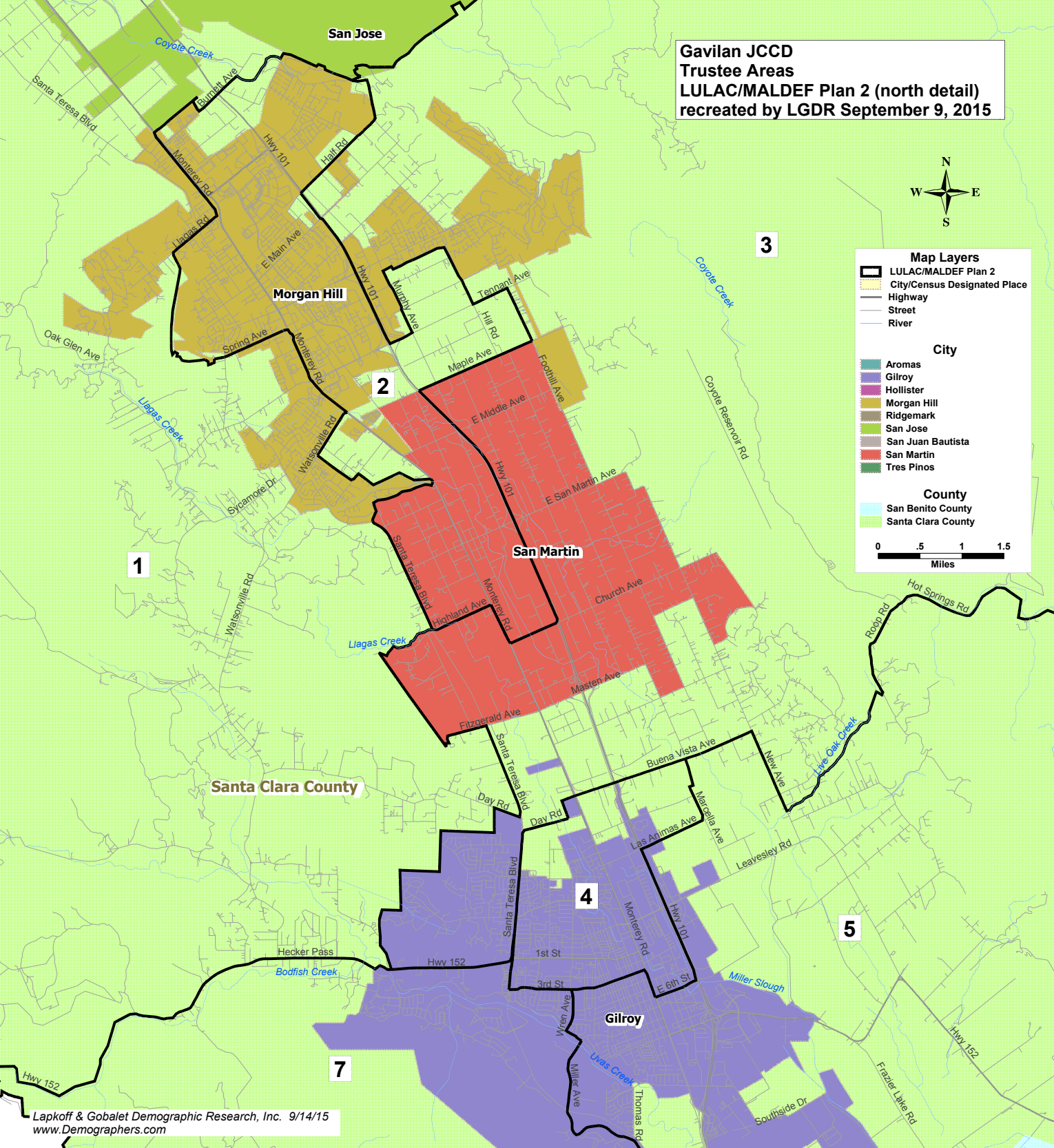
City

- Aromas
- Gilroy
- Hollister
- Morgan Hill
- Ridgemark
- San Jose
- San Juan Bautista
- San Martin
- Tres Pinos

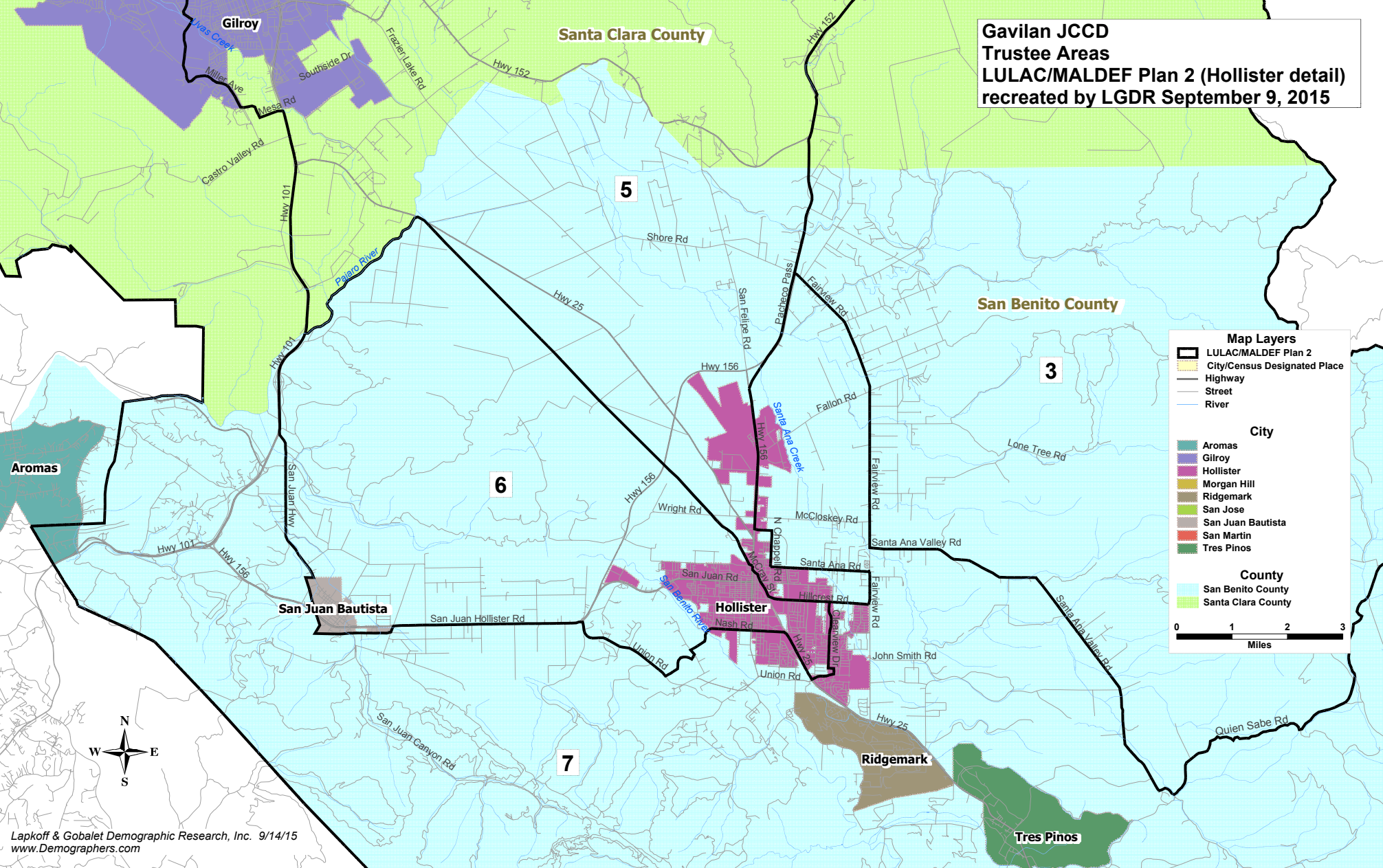
County

- San Benito County
- Santa Clara County

0 .5 1 1.5
Miles



**Gavilan JCCD
Trustee Areas
LULAC/MALDEF Plan 2 (Hollister detail)
recreated by LGDR September 9, 2015**



Map Layers

- LULAC/MALDEF Plan 2
- City/Census Designated Place
- Highway
- Street
- River

City

- Aromas
- Gilroy
- Hollister
- Morgan Hill
- Ridgemark
- San Jose
- San Juan Bautista
- San Martin
- Tres Pinos

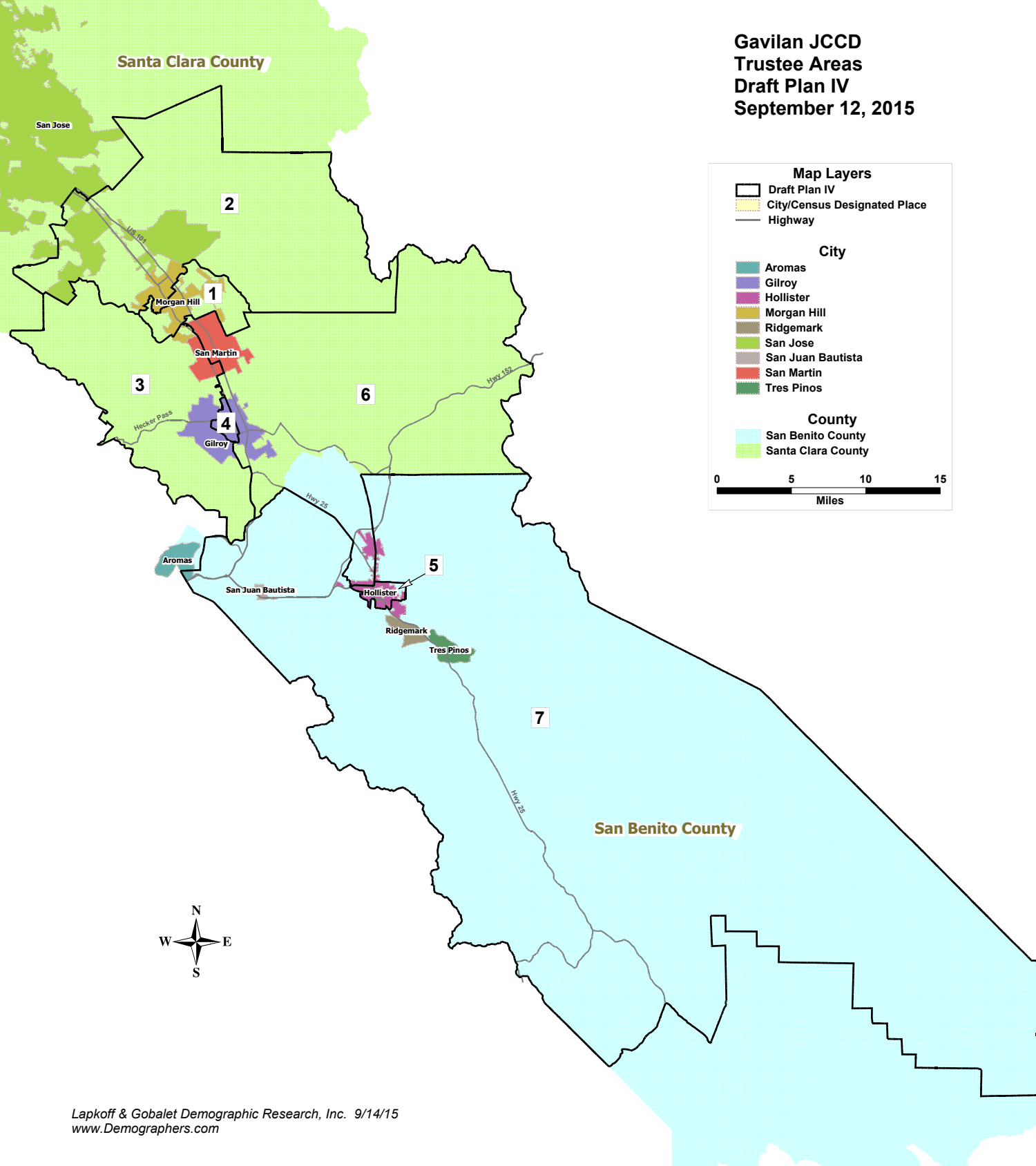
County

- San Benito County
- Santa Clara County

0 1 2 3
Miles



**Gavilan JCCD
Trustee Areas
Draft Plan IV
September 12, 2015**



Map Layers

- Draft Plan IV
- City/Census Designated Place
- Highway

City

- Aromas
- Gilroy
- Hollister
- Morgan Hill
- Ridgemark
- San Jose
- San Juan Bautista
- San Martin
- Tres Pinos

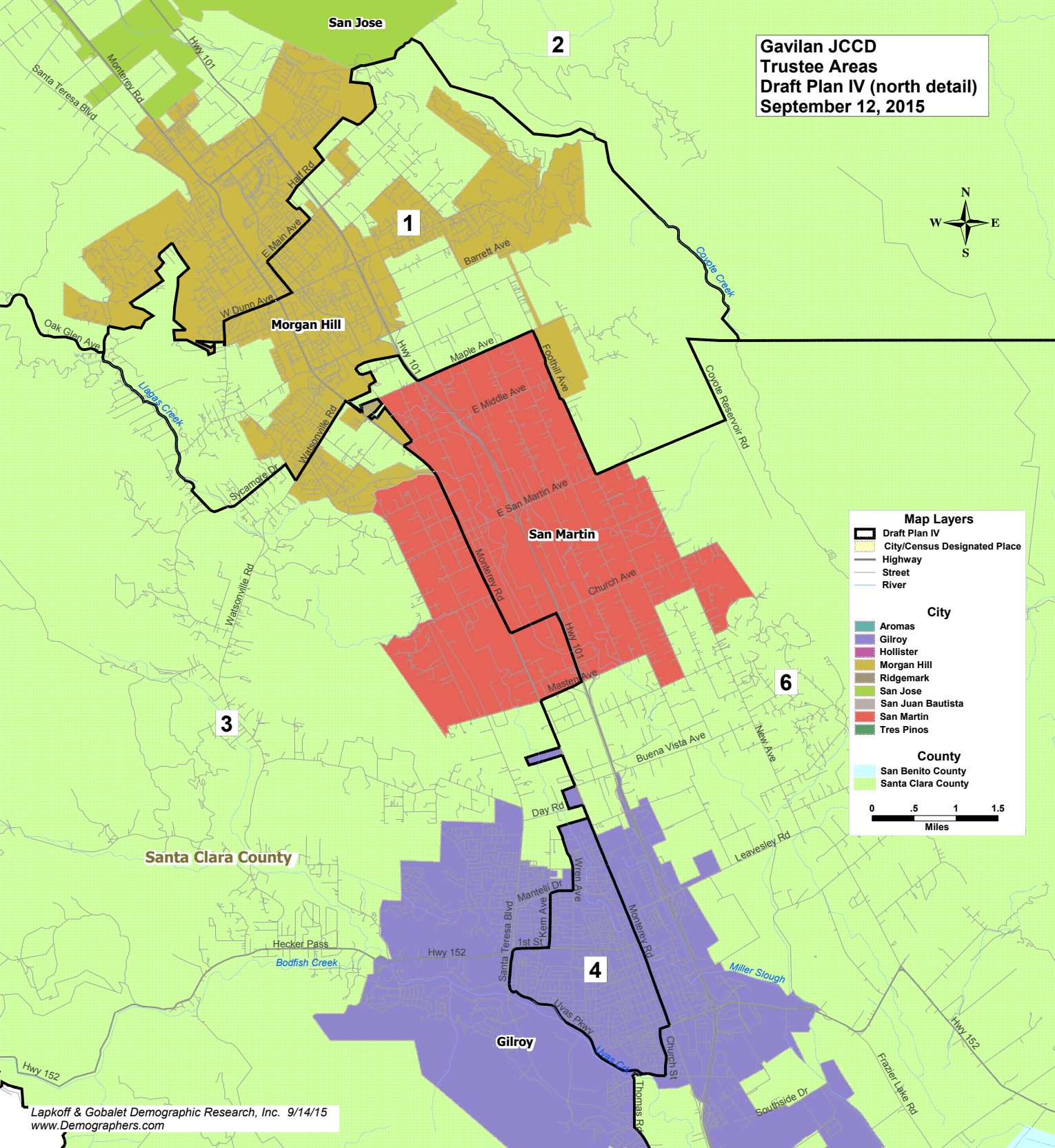
County

- San Benito County
- Santa Clara County

0 5 10 15
Miles



**Gavilan JCCD
Trustee Areas
Draft Plan IV (north detail)
September 12, 2015**



Map Layers

- Draft Plan IV
- City/Census Designated Place
- Highway
- Street
- River

City

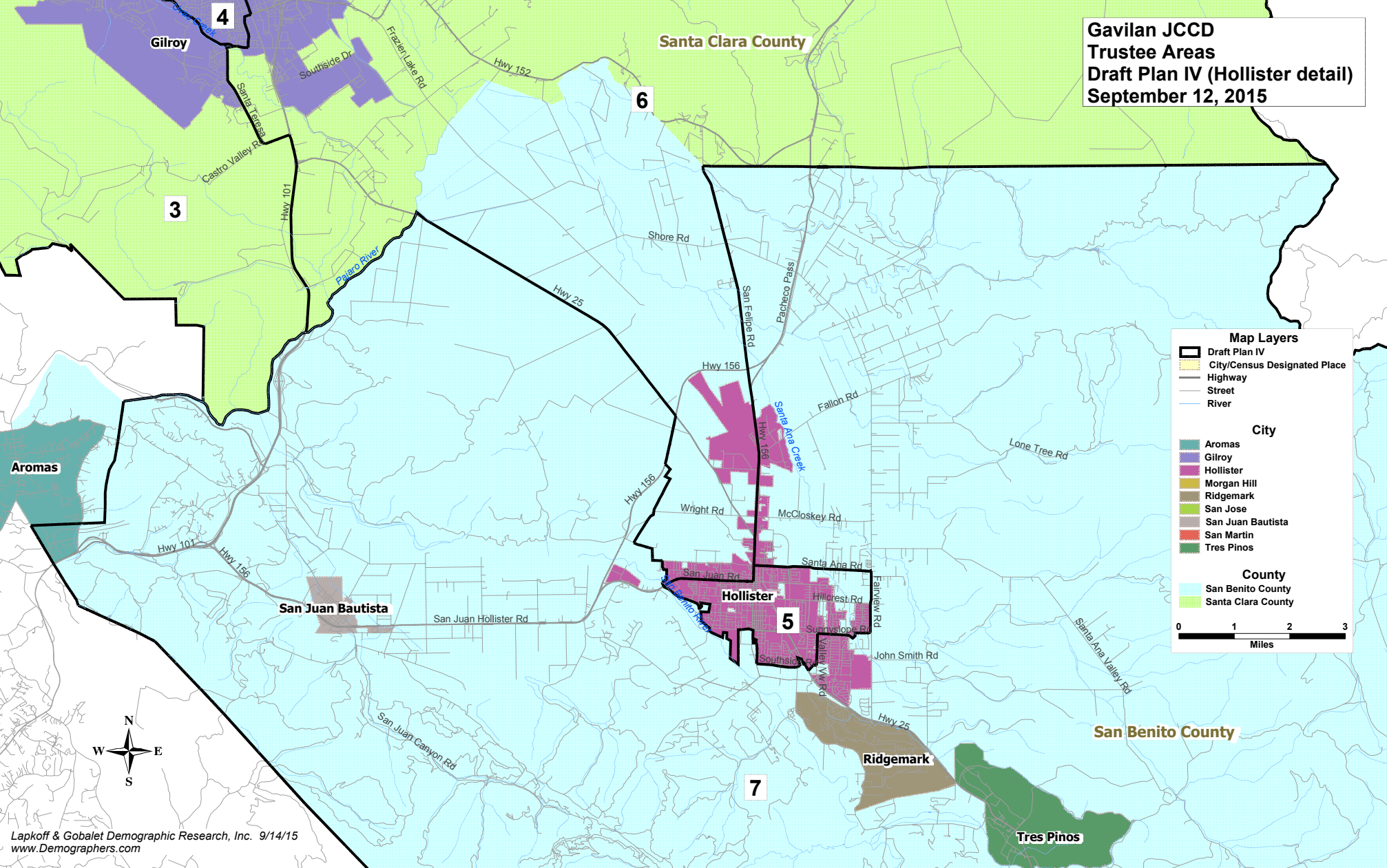
- Aromas
- Gilroy
- Hollister
- Morgan Hill
- Ridgemark
- San Jose
- San Juan Bautista
- San Martin
- Tres Pinos

County

- San Benito County
- Santa Clara County

0 .5 1 1.5
Miles

**Gavilan JCCD
Trustee Areas
Draft Plan IV (Hollister detail)
September 12, 2015**



Map Layers

- Draft Plan IV
- City/Census Designated Place
- Highway
- Street
- River

City

- Aromas
- Gilroy
- Hollister
- Morgan Hill
- Ridgemark
- San Jose
- San Juan Bautista
- San Martin
- Tres Pinos

County

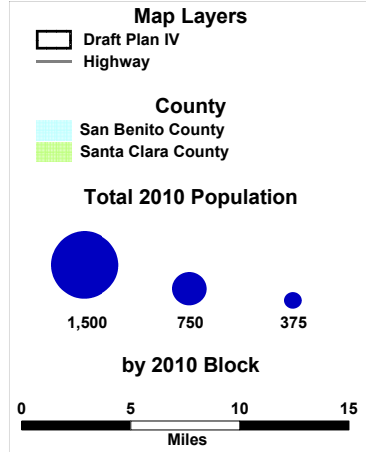
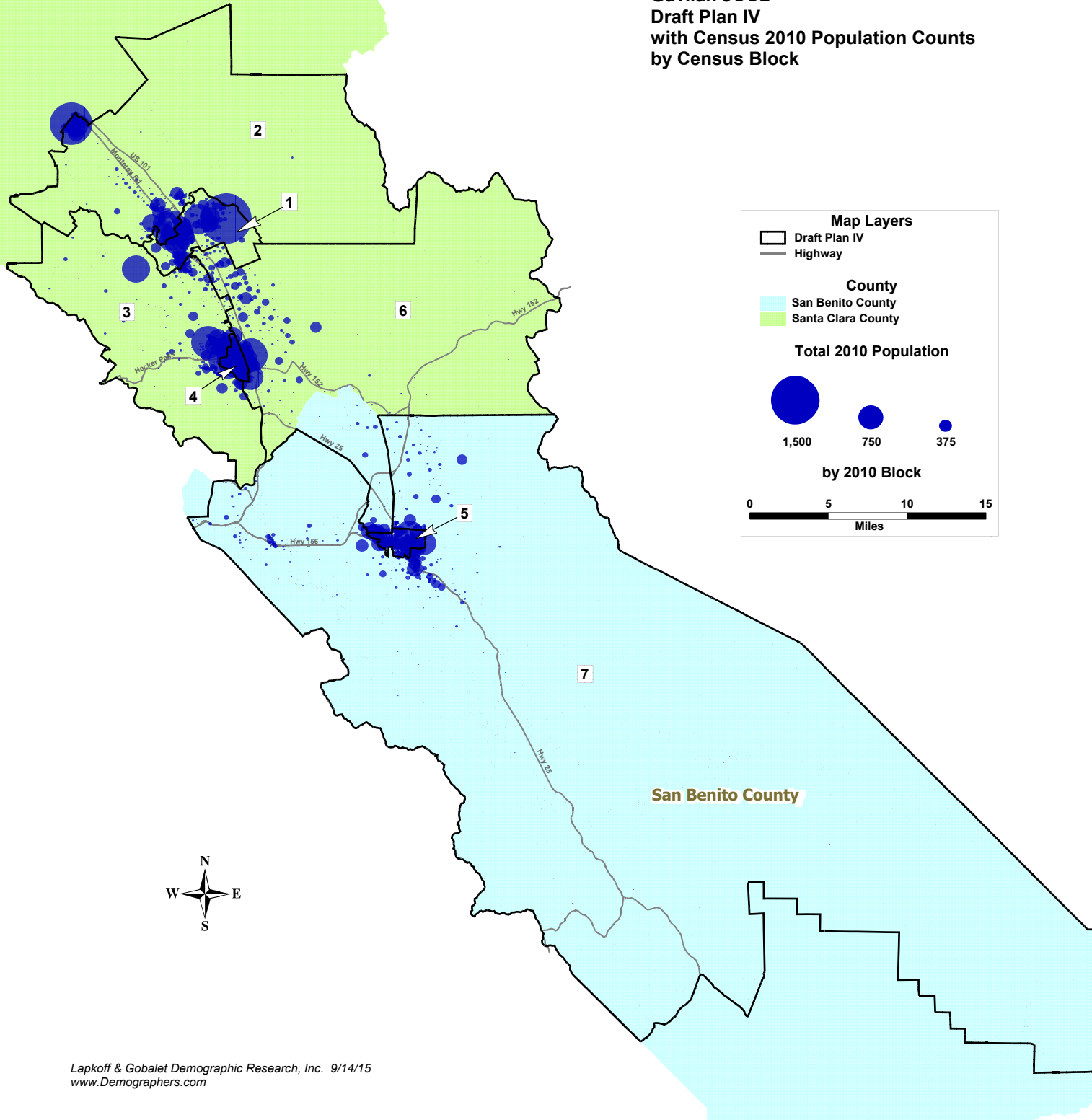
- San Benito County
- Santa Clara County

0 1 2 3
Miles

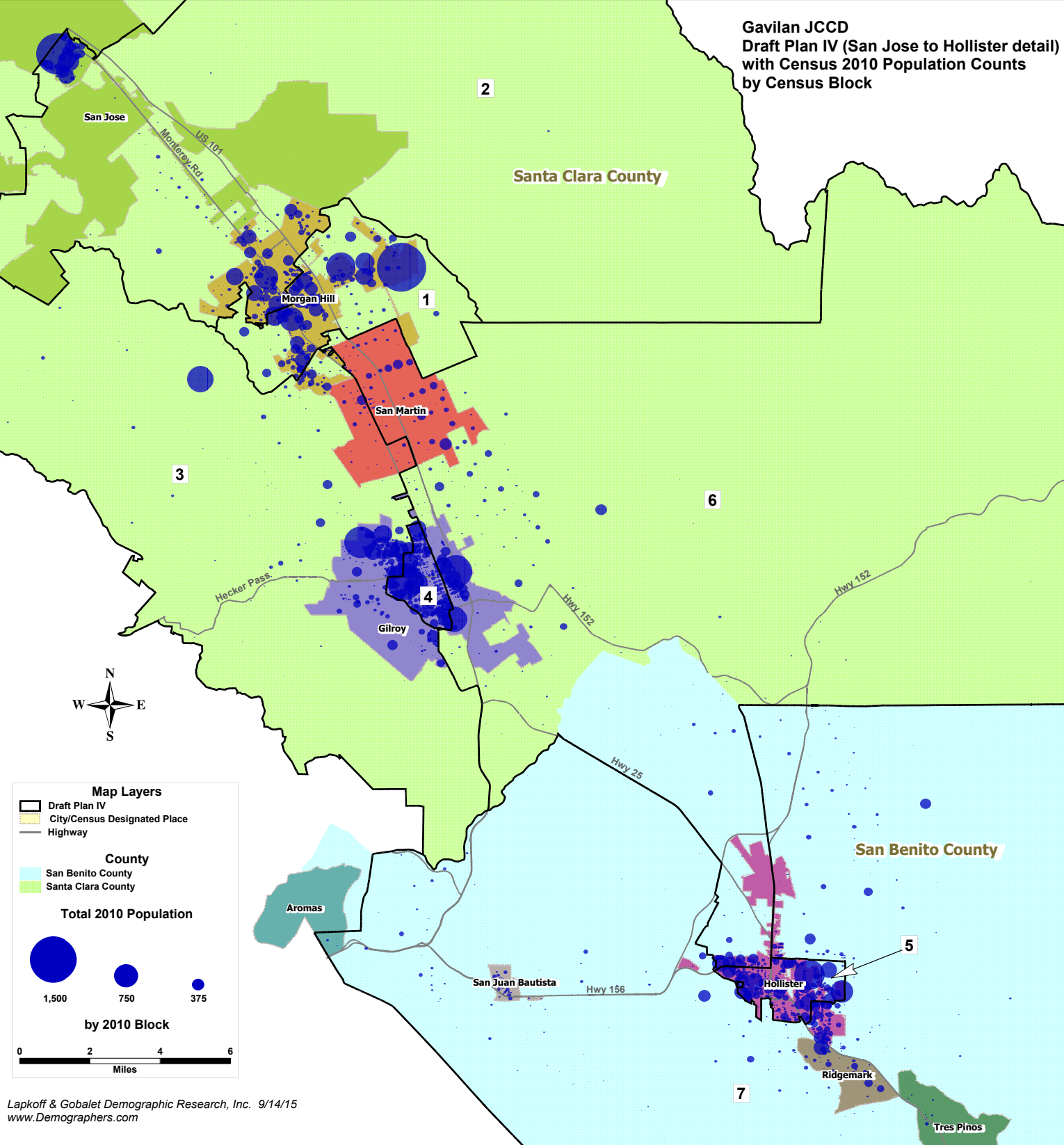


Santa Clara County

Gavilan JCCD Draft Plan IV with Census 2010 Population Counts by Census Block



Gavilan JCCD
 Draft Plan IV (San Jose to Hollister detail)
 with Census 2010 Population Counts
 by Census Block



Map Layers

- Draft Plan IV
- City/Census Designated Place
- Highway

County

- San Benito County
- Santa Clara County

Total 2010 Population

by 2010 Block

1,500 750 375

0 2 4 6

Miles